

For Research Use Only

CRYGD Polyclonal antibody

Catalog Number:32233-1-AP



Basic Information

Catalog Number:

32233-1-AP

Source:

Rabbit

Isotype:

IgG

Immunogen Catalog Number:

AG37473

GenBank Accession Number:

NM_006891.3

GeneID (NCBI):

1421

UNIPROT ID:

P07320

Full Name:

crystallin, gamma D

Calculated MW:

21kDa, 174aa

Observed MW:

18 kDa

Purification Method:

Antigen affinity Purification

Recommended Dilutions:

WB: 1:5000-1:50000

Applications

Tested Applications:

WB, ELISA

Species Specificity:

human, mouse, rat

Positive Controls:

WB : mouse eye tissue, rat eye tissue

Background Information

CRYGD (Crystallin Gamma D) is a structural protein predominantly expressed in the lens of the eye. It plays a critical role in maintaining lens transparency and refractive index. Mutations in the CRYGD gene are associated with inherited forms of congenital cataracts, making it a genetic target for studying lens development and cataract pathogenesis. It is not a conventional therapeutic drug target but serves as a key marker in ocular disease research.

Storage

Storage:

Store at -20°C. Stable for one year after shipment.

Storage Buffer:

PBS with 0.02% sodium azide and 50% glycerol, pH7.3

Aliquoting is unnecessary for -20°C storage

For technical support and original validation data for this product please contact:

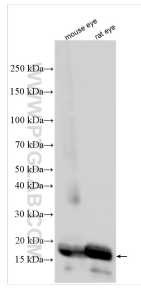
T: 4006900926

E: Proteintech-CN@ptglab.com

W: ptgcn.com

This product is exclusively available under Proteintech Group brand and is not available to purchase from any other manufacturer.

Selected Validation Data



Various lysates were subjected to SDS PAGE followed by western blot with 32233-1-AP (CRYGD antibody) at dilution of 1:40000 incubated at room temperature for 1.5 hours.