

For Research Use Only

SEC24B Polyclonal antibody

Catalog Number:32225-1-AP



Basic Information

Catalog Number:

32225-1-AP

Size:

350 ug/ml

Source:

Rabbit

Isotype:

IgG

Immunogen Catalog Number:

AG36544

GenBank Accession Number:

NM_006323.4

GeneID (NCBI):

10427

UNIPROT ID:

O95487

Full Name:

SEC24 family, member B (S. cerevisiae)

Calculated MW:

137kDa, 1268aa

Observed MW:

140 kDa

Purification Method:

Antigen affinity Purification

Recommended Dilutions:

WB 1:2000-1:10000

Applications

Tested Applications:

WB, ELISA

Species Specificity:

human

Positive Controls:

WB : HEK-293 cells, HeLa cells, HepG2 cells, L02 cells

Background Information

SEC24B is a gene that encodes a protein belonging to the SEC23/SEC24 family, which is involved in vesicle trafficking. The protein is thought to be a cargo-binding component of the COPII vesicle and is involved in the transport of secretory proteins from the endoplasmic reticulum to the Golgi apparatus.

Storage

Storage:

Store at -20°C. Stable for one year after shipment.

Storage Buffer:

PBS with 0.02% sodium azide and 50% glycerol pH 7.3.

Aliquoting is unnecessary for -20°C storage

For technical support and original validation data for this product please contact:

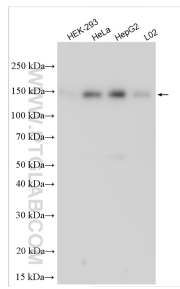
T: 4006900926

E: Proteintech-CN@ptglab.com

W: ptgcn.com

This product is exclusively available under Proteintech Group brand and is not available to purchase from any other manufacturer.

Selected Validation Data



Various lysates were subjected to SDS PAGE followed by western blot with 32225-1-AP (SEC24B antibody) at dilution of 1:5000 incubated at room temperature for 1.5 hours.