

For Research Use Only

# GCC2 Polyclonal antibody

Catalog Number: 32217-1-AP



## Basic Information

**Catalog Number:**

32217-1-AP

**Source:**

Rabbit

**Isotype:**

IgG

**Immunogen Catalog Number:**

AG17535

**GenBank Accession Number:**

BC146789

**GeneID (NCBI):**

9648

**UNIPROT ID:**

Q8IWI2

**Full Name:**

GRIP and coiled-coil domain containing 2

**Calculated MW:**

1583 aa, 185 kDa

**Observed MW:**

200 kDa

**Purification Method:**

Antigen affinity Purification

**Recommended Dilutions:**

WB: 1:5000-1:50000

IHC: 1:2000-1:8000

## Applications

**Tested Applications:**

WB, IHC, ELISA

**Species Specificity:**

human

**Note-IHC: suggested antigen retrieval with TE buffer pH 9.0; (\*) Alternatively, antigen retrieval may be performed with citrate buffer pH 6.0**

**Positive Controls:**

WB: HEK-293T cells, HeLa cells, Jurkat cells, Raji cells

IHC: human stomach cancer tissue,

## Background Information

The GCC2 protein, fully named GRIP and Coiled-Coil Domain-Containing Protein 2, is a key adaptor protein in the intracellular Golgi-endosomal membrane transport system. It specifically anchors to the Golgi membrane via its GRIP domain and is primarily responsible for mediating retrograde vesicular transport from endosomes to the Golgi apparatus, participating in the recycling and sorting of various cargo proteins, such as the mannose-6-phosphate receptor. Recent studies have revealed that GCC2 regulates the subcellular localization of the GATOR complex, thereby acting as an important upstream regulator of the mTORC1 signaling pathway, which influences cell growth, metabolism, and autophagy. Dysfunction of GCC2 is closely associated with neurodevelopmental disorders and tumorigenesis, underscoring its significance in cell biology and disease research.

## Storage

**Storage:**

Store at -20°C. Stable for one year after shipment.

**Storage Buffer:**

PBS with 0.02% sodium azide and 50% glycerol, pH7.3

Aliquoting is unnecessary for -20°C storage

For technical support and original validation data for this product please contact:

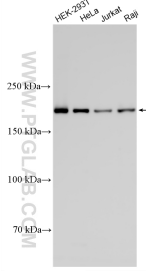
T: 4006900926

E: Proteintech-CN@ptglab.com

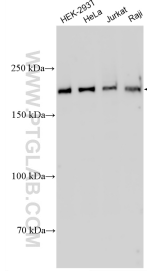
W: ptgcn.com

**This product is exclusively available under Proteintech Group brand and is not available to purchase from any other manufacturer.**

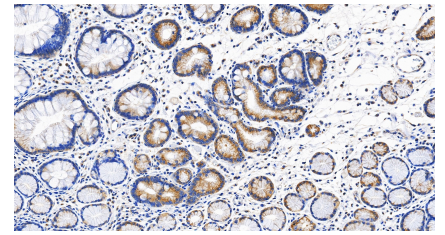
## Selected Validation Data



Various lysates were subjected to SDS PAGE followed by western blot with 32217-1-AP (GCC2 antibody) at dilution of 1:20000 incubated at room temperature for 1.5 hours.



Various lysates were subjected to SDS PAGE followed by western blot with 32217-1-AP (GCC2 antibody) at dilution of 1:10000 incubated at room temperature for 1.5 hours.



Immunohistochemical analysis of paraffin-embedded human stomach cancer tissue slide using 32217-1-AP (GCC2 antibody) at dilution of 1:4000 (under 20x lens). Heat mediated antigen retrieval with Tris-EDTA buffer (pH 9.0).