

For Research Use Only

# C1QL2 Polyclonal antibody

Catalog Number: 32206-1-AP



## Basic Information

Catalog Number:

32206-1-AP

Concentration:

350 ug/ml

Source:

Rabbit

Isotype:

IgG

Immunogen Catalog Number:

AG37614

GenBank Accession Number:

NM\_182528

GeneID (NCBI):

165257

UNIPROT ID:

Q7Z5L3

Full Name:

complement component 1, q  
subcomponent-like 2

Calculated MW:

29 kDa

Observed MW:

35 kDa

Purification Method:

Antigen affinity Purification

Recommended Dilutions:

WB 1:500-1:1000

## Applications

Tested Applications:

WB, ELISA

Species Specificity:

human, mouse, rat

Positive Controls:

WB : mouse brain tissue, rat brain tissue

## Background Information

Complement C1q-like protein 2 (C1QL2, also known as CTRP10) is a member of the C1q-like protein family. It is a secreted protein that plays a role in synaptic organization and function. C1QL2 is involved in the formation and maintenance of synapses, particularly in the central nervous system (CNS) (PMID: 20646056). It interacts with specific neurexin-3 isoforms to recruit synaptic vesicles and modulate synaptic transmission. Additionally, C1QL2 has been implicated in the regulation of hippocampal mossy fiber-CA3 synapse function, suggesting its role in synaptic plasticity and memory formation (PMID: 28219683).

## Storage

Storage:

Store at -20°C. Stable for one year after shipment.

Storage Buffer:

PBS with 0.02% sodium azide and 50% glycerol

Aliquoting is unnecessary for -20°C storage

For technical support and original validation data for this product please contact:

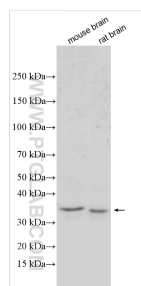
T: 4006900926

E: [Proteintech-CN@ptglab.com](mailto:Proteintech-CN@ptglab.com)

W: [ptgcn.com](http://ptgcn.com)

This product is exclusively available under Proteintech Group brand and is not available to purchase from any other manufacturer.

## Selected Validation Data



Various lysates were subjected to SDS PAGE followed by western blot with 32206-1-AP (C1QL2 antibody) at dilution of 1:500 incubated at room temperature for 1.5 hours.