

For Research Use Only

# CEACAM16 Polyclonal antibody, PBS Only

Catalog Number: 32196-1-PBS



## Basic Information

<b>Catalog Number:</b> 32196-1-PBS	<b>GenBank Accession Number:</b> BC156855	<b>Purification Method:</b> Antigen affinity Purification
<b>Source:</b> Rabbit	<b>GeneID (NCBI):</b> 388551	
<b>Isotype:</b> IgG	<b>UNIPROT ID:</b> Q2WEN9	
<b>Immunogen Catalog Number:</b> AG37542	<b>Full Name:</b> carcinoembryonic antigen-related cell adhesion molecule 16	
	<b>Observed MW:</b> 48 kDa	

## Applications

**Tested Applications:**  
WB, IHC, Indirect ELISA

**Species Specificity:**  
human, mouse, rat

## Background Information

CEACAM16 (Carcinoembryonic Antigen-Related Cell Adhesion Molecule 16) is a member of the CEA family of cell adhesion molecules. It is a critical component of the tectorial membrane in the inner ear, playing a significant role in maintaining hearing function. Mutations in the CEACAM16 gene are associated with autosomal dominant nonsyndromic hearing loss (DFNA4B), characterized by progressive high-frequency hearing impairment. Research has shown that loss or dysfunction of CEACAM16 leads to structural abnormalities in the tectorial membrane, thereby affecting hearing. The identification of CEACAM16 has provided important insights into the genetic basis of hereditary hearing loss and has implications for the diagnosis and treatment of hearing disorders.

## Storage

**Storage:**  
Store at -80°C.  
**The product is shipped with ice packs. Upon receipt, store it immediately at -80°C**

**Storage Buffer:**  
PBS only, pH7.3

For technical support and original validation data for this product please contact:

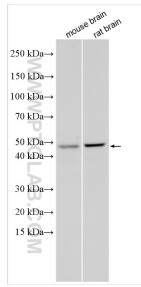
T: 4006900926

E: [Proteintech-CN@ptglab.com](mailto:Proteintech-CN@ptglab.com)

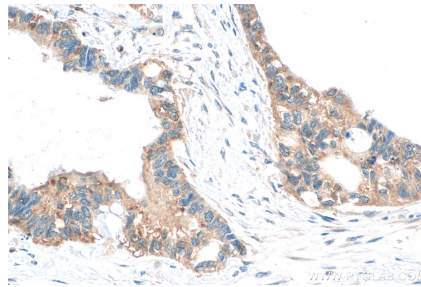
W: [ptgcn.com](http://ptgcn.com)

**This product is exclusively available under Proteintech Group brand and is not available to purchase from any other manufacturer.**

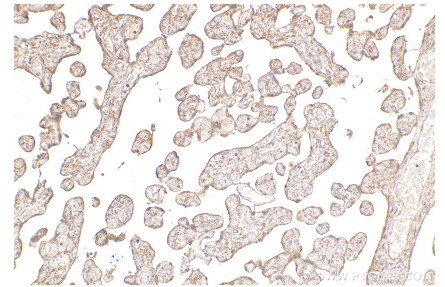
## Selected Validation Data



Various lysates were subjected to SDS PAGE followed by western blot with 32196-1-AP (CEACAM16 antibody) at dilution of 1:600 incubated at room temperature for 1.5 hours. This data was developed using the same antibody clone with 32196-1-PBS in a different storage buffer formulation.



Immunohistochemical analysis of paraffin-embedded human urothelial carcinoma tissue slide using 32196-1-AP (CEACAM16 antibody) at dilution of 1:200 (under 40x lens). Heat mediated antigen retrieval with Tris-EDTA buffer (pH 9.0). This data was developed using the same antibody clone with 32196-1-PBS in a different storage buffer formulation.



Immunohistochemical analysis of paraffin-embedded human placenta tissue slide using 32196-1-AP (CEACAM16 antibody) at dilution of 1:200 (under 10x lens). Heat mediated antigen retrieval with Tris-EDTA buffer (pH 9.0). This data was developed using the same antibody clone with 32196-1-PBS in a different storage buffer formulation.