

For Research Use Only

CEACAM16 Polyclonal antibody

Catalog Number:32196-1-AP



Basic Information

Catalog Number: 32196-1-AP	GenBank Accession Number: BC156855	Purification Method: Antigen affinity Purification
Source: Rabbit	GeneID (NCBI): 388551	Recommended Dilutions: WB: 1:500-1:1000 IHC: 1:50-1:500
Isotype: IgG	UNIPROT ID: Q2WEN9	
Immunogen Catalog Number: AG37542	Full Name: carcinoembryonic antigen-related cell adhesion molecule 16	
	Observed MW: 48 kDa	

Applications

Tested Applications: WB, IHC, ELISA	Positive Controls:
Species Specificity: human, mouse, rat	WB : mouse brain tissue, rat brain tissue
Note-IHC: suggested antigen retrieval with TE buffer pH 9.0; (*) Alternatively, antigen retrieval may be performed with citrate buffer pH 6.0	IHC : human placenta tissue, human urothelial carcinoma tissue

Background Information

CEACAM16 (Carcinoembryonic Antigen-Related Cell Adhesion Molecule 16) is a member of the CEA family of cell adhesion molecules. It is a critical component of the tectorial membrane in the inner ear, playing a significant role in maintaining hearing function. Mutations in the CEACAM16 gene are associated with autosomal dominant nonsyndromic hearing loss (DFNA4B), characterized by progressive high-frequency hearing impairment. Research has shown that loss or dysfunction of CEACAM16 leads to structural abnormalities in the tectorial membrane, thereby affecting hearing. The identification of CEACAM16 has provided important insights into the genetic basis of hereditary hearing loss and has implications for the diagnosis and treatment of hearing disorders.

Storage

Storage:
Store at -20°C. Stable for one year after shipment.
Storage Buffer:
PBS with 0.02% sodium azide and 50% glycerol, pH7.3
Aliquoting is unnecessary for -20°C storage

For technical support and original validation data for this product please contact:

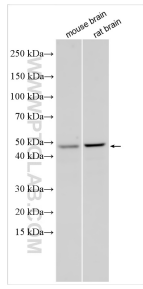
T: 4006900926

E: Proteintech-CN@ptglab.com

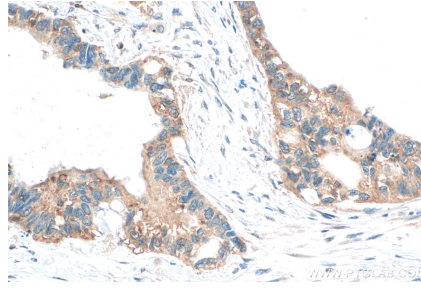
W: ptgcn.com

This product is exclusively available under Proteintech Group brand and is not available to purchase from any other manufacturer.

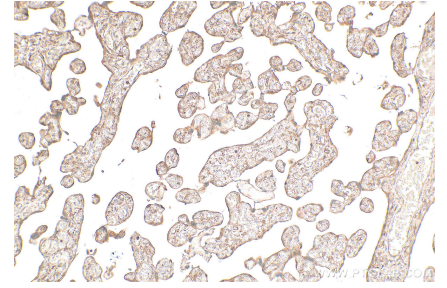
Selected Validation Data



Various lysates were subjected to SDS PAGE followed by western blot with 32196-1-AP (CEACAM16 antibody) at dilution of 1:600 incubated at room temperature for 1.5 hours.



Immunohistochemical analysis of paraffin-embedded human urothelial carcinoma tissue slide using 32196-1-AP (CEACAM16 antibody) at dilution of 1:200 (under 40x lens). Heat mediated antigen retrieval with Tris-EDTA buffer (pH 9.0).



Immunohistochemical analysis of paraffin-embedded human placenta tissue slide using 32196-1-AP (CEACAM16 antibody) at dilution of 1:200 (under 10x lens). Heat mediated antigen retrieval with Tris-EDTA buffer (pH 9.0).