

For Research Use Only

EPCAM/CD326 Polyclonal antibody

Catalog Number: 32189-1-AP



Basic Information

Catalog Number:

32189-1-AP

Size:

400 ug/ml

Source:

Rabbit

Isotype:

IgG

GenBank Accession Number:

NM_008532.2

GeneID (NCBI):

17075

UNIPROT ID:

Q99JW5

Full Name:

epithelial cell adhesion molecule

Calculated MW:

35 kDa

Observed MW:

40 kDa

Purification Method:

Antigen affinity Purification

Recommended Dilutions:

WB 1:2000-1:12000

IHC 1:500-1:2000

IF-P 1:50-1:500

Applications

Tested Applications:

WB, IHC, IF-P, ELISA

Species Specificity:

mouse, rat

Note-IHC: suggested antigen retrieval with TE buffer pH 9.0; (*) Alternatively, antigen retrieval may be performed with citrate buffer pH 6.0

Positive Controls:

WB : mouse colon tissue, mouse small intestine tissue, rat colon tissue

IHC : mouse colon tissue, rat small intestine tissue

IF-P : rat liver tissue, mouse colon tissue

Background Information

Epithelial cell adhesion molecule (EpCAM, CD326) is a type I transmembrane glycoprotein that functions as a homophilic, epithelial-specific intercellular cell-adhesion molecule. In addition to cell adhesion, EpCAM is also involved in cellular signaling, cell migration, proliferation, and differentiation. EpCAM is highly expressed on most carcinomas and therefore of potential use as a diagnostic and prognostic marker for a variety of carcinomas, and has become a therapeutic target. EpCAM may occur in distinct forms due to glycosylation. (PMID: 20837599; 19249674; 21576002; 22647938; 12691820)

Storage

Storage:

Store at -20°C. Stable for one year after shipment.

Storage Buffer:

PBS with 0.02% sodium azide and 50% glycerol pH 7.3.

Aliquoting is unnecessary for -20°C storage

For technical support and original validation data for this product please contact:

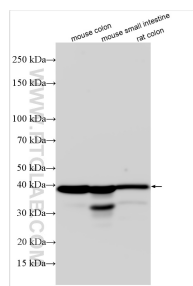
T: 4006900926

E: Proteintech-CN@ptglab.com

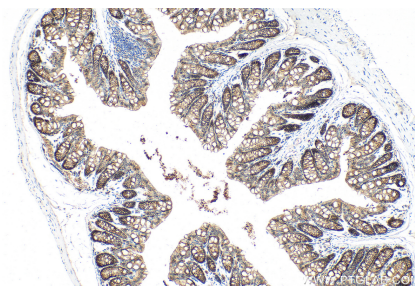
W: ptgcn.com

This product is exclusively available under Proteintech Group brand and is not available to purchase from any other manufacturer.

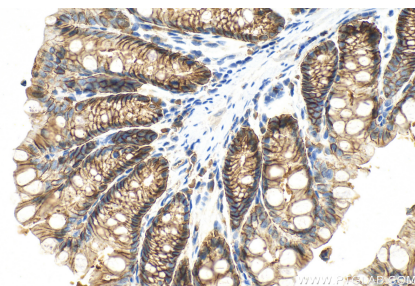
Selected Validation Data



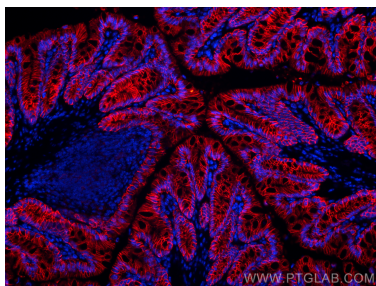
Various lysates were subjected to SDS PAGE followed by western blot with 32189-1-AP (EPCAM/CD326 antibody) at dilution of 1:6000 incubated at room temperature for 1.5 hours.



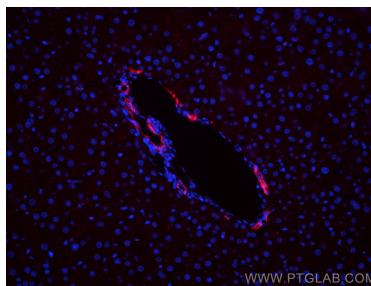
Immunohistochemical analysis of paraffin-embedded mouse colon tissue slide using 32189-1-AP (EPCAM/CD326 antibody) at dilution of 1:1000 (under 10x lens). Heat mediated antigen retrieval with Tris-EDTA buffer (pH 9.0).



Immunohistochemical analysis of paraffin-embedded mouse colon tissue slide using 32189-1-AP (EPCAM/CD326 antibody) at dilution of 1:1000 (under 40x lens). Heat mediated antigen retrieval with Tris-EDTA buffer (pH 9.0).



Immunofluorescent analysis of (4% PFA) fixed paraffin-embedded mouse colon tissue using EPCAM/CD326 antibody (32189-1-AP) at dilution of 1:200 and CoraLite®594-Conjugated Goat Anti-Rabbit IgG(H+L) (SA00013-4). Heat mediated antigen retrieval with Tris-EDTA buffer (pH 9.0).



Immunofluorescent analysis of (4% PFA) fixed paraffin-embedded rat liver tissue using EPCAM/CD326 antibody (32189-1-AP) at dilution of 1:200 and CoraLite®594-Conjugated Goat Anti-Rabbit IgG(H+L) (SA00013-4). Heat mediated antigen retrieval with Tris-EDTA buffer (pH 9.0).