

For Research Use Only

CD22 Polyclonal antibody

Catalog Number: 32183-1-AP



Basic Information

Catalog Number:

32183-1-AP

Size:

700 ug/ml

Source:

Rabbit

Isotype:

IgG

GenBank Accession Number:

NM_001043317.2

GeneID (NCBI):

12483

UNIPROT ID:

P35329-1

Full Name:

CD22 antigen

Calculated MW:

97kDa

Observed MW:

120-150 kDa

Purification Method:

Antigen affinity Purification

Recommended Dilutions:

WB 1:500-1:2000

IF-P 1:50-1:500

Applications

Tested Applications:

WB, IF-P, FC, ELISA

Species Specificity:

mouse

Positive Controls:

WB : mouse spleen tissue,

IF-P : mouse spleen tissue,

Background Information

CD22, also known as Siglec-2 (sialic acid binding Ig-like lectin 2) or BL-CAM (B-lymphocyte cell adhesion molecule), is a 130-140 kDa, B-cell restricted, type I transmembrane glycoprotein belonging to the immunoglobulin gene superfamily. The expression of CD22 is developmentally regulated. It is expressed at low levels in the cytoplasm of pro-B and pre-B cells and present on the cell surface only at mature stages of B-cell differentiation. Cell surface expression is lost during terminal differentiation into plasma cell and after B-cell activation. CD22 is an inhibitory receptor for B-cell receptor (BCR) signalling, preferentially binds to alpha-2,6-linked sialic acid and mediates B-cell B-cell interactions. It plays a crucial role in activation and differentiation of the B-cell.

Storage

Storage:

Store at -20°C. Stable for one year after shipment.

Storage Buffer:

PBS with 0.02% sodium azide and 50% glycerol pH 7.3.

Aliquoting is unnecessary for -20°C storage

For technical support and original validation data for this product please contact:

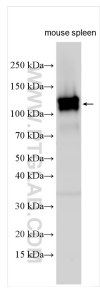
T: 4006900926

E: Proteintech-CN@ptglab.com

W: ptgcn.com

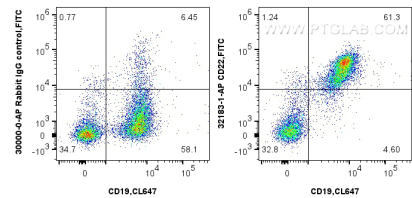
This product is exclusively available under Proteintech Group brand and is not available to purchase from any other manufacturer.

Selected Validation Data



Various lysates were subjected to SDS PAGE followed by western blot with 32183-1-AP (CD22 antibody) at dilution of 1:1000 incubated at room temperature for 1.5 hours.

Immunofluorescent analysis of (4% PFA) fixed paraffin-embedded mouse spleen tissue using CD22 antibody (32183-1-AP) at dilution of 1:200 and Coralite®594-Conjugated Goat Anti-Rabbit IgG(H+L) (SA00013-4). Heat mediated antigen retrieval with Tris-EDTA buffer (pH 9.0).



1x10⁶ mouse splenocytes were surface stained with 0.25 ug CD22 Polyclonal antibody (32183-1-AP) and Coralite®488-Conjugated Goat Anti-Rabbit IgG(H+L) (SA00013-2)(red), or 0.25 ug (CL647-65290), or 0.25 ug Rabbit IgG control Rabbit PolyAb (30000-O-AP) (blue). Cells were not fixed.