

For Research Use Only

C1QL3 Polyclonal antibody, PBS Only

Catalog Number:32175-1-PBS



Basic Information

Catalog Number:

32175-1-PBS

Concentration:

1 mg/ml

Source:

Rabbit

Isotype:

IgG

Immunogen Catalog Number:

AG37280

GenBank Accession Number:

BC127716

GeneID (NCBI):

389941

UNIPROT ID:

Q5VWW1

Full Name:

complement component 1, q
subcomponent-like 3

Calculated MW:

27 kDa

Observed MW:

70 kDa, 27 kDa

Purification Method:

Antigen affinity Purification

Applications

Tested Applications:

WB, Indirect ELISA

Species Specificity:

human

Background Information

C1Q-like (C1QL) proteins bind to the adhesion G protein coupled receptor B3 (ADGRB3) and act at synapses in a subset of circuits. Complement C1q-like 3 (C1QL3, also known as CTRP13) is one of the C1QL proteins. Some C1QL3 migrated as a monomer (~26 kDa) and some as a trimer (60-70 kDa), indicating a desired substantial yet incomplete crosslinking of monomers (PMID: 33337553). The doublet band of trimer probably represents differential posttranslational modifications (PMID: 21378161). Bands of larger molecular weights suggested either trimers cross-linked into higher molecular weight oligomers or C1QL3 cross-linked to binding partners (PMID: 33337553).

Storage

Storage:

Store at -80°C.

The product is shipped with ice packs. Upon receipt, store it immediately at -80°C

Storage Buffer:

PBS only

For technical support and original validation data for this product please contact:

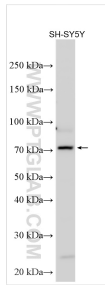
T: 4006900926

E: Proteintech-CN@ptglab.com

W: ptgcn.com

This product is exclusively available under Proteintech Group brand and is not available to purchase from any other manufacturer.

Selected Validation Data



Various lysates were subjected to SDS PAGE followed by western blot with 32175-1-AP (C1QL3 antibody) at dilution of 1:1500 incubated at room temperature for 1.5 hours. This data was developed using the same antibody clone with 32175-1-PBS in a different storage buffer formulation.