

For Research Use Only

# C1QL3 Polyclonal antibody

Catalog Number: 32175-1-AP



## Basic Information

Catalog Number:

32175-1-AP

Concentration:

500 ug/ml

Source:

Rabbit

Isotype:

IgG

Immunogen Catalog Number:

AG37280

GenBank Accession Number:

BC127716

GeneID (NCBI):

389941

UNIPROT ID:

Q5VWW1

Full Name:

complement component 1, q  
subcomponent-like 3

Calculated MW:

27 kDa

Observed MW:

70 kDa, 27 kDa

Purification Method:

Antigen affinity Purification

Recommended Dilutions:

WB 1:500-1:3000

## Applications

Tested Applications:

WB, ELISA

Species Specificity:

human

Positive Controls:

WB : SH-SY5Y cells,

## Background Information

C1Q-like (C1QL) proteins bind to the adhesion G protein coupled receptor B3 (ADGRB3) and act at synapses in a subset of circuits. Complement C1q-like 3 (C1QL3, also known as CTRP13) is one of the C1QL proteins. Some C1QL3 migrated as a monomer (~26 kDa) and some as a trimer (60-70 kDa), indicating a desired substantial yet incomplete crosslinking of monomers (PMID: 33337553). The doublet band of trimer probably represents differential posttranslational modifications (PMID: 21378161). Bands of larger molecular weights suggested either trimers cross-linked into higher molecular weight oligomers or C1QL3 cross-linked to binding partners (PMID: 33337553).

## Storage

Storage:

Store at -20°C. Stable for one year after shipment.

Storage Buffer:

PBS with 0.02% sodium azide and 50% glycerol

Aliquoting is unnecessary for -20°C storage

For technical support and original validation data for this product please contact:

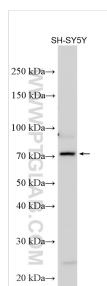
T: 4006900926

E: [Proteintech-CN@ptglab.com](mailto:Proteintech-CN@ptglab.com)

W: [ptgcn.com](http://ptgcn.com)

This product is exclusively available under Proteintech Group brand and is not available to purchase from any other manufacturer.

## Selected Validation Data



Various lysates were subjected to SDS PAGE followed by western blot with 32175-1-AP (C1QL3 antibody) at dilution of 1:1500 incubated at room temperature for 1.5 hours.