

For Research Use Only

# UBFD1 Polyclonal antibody, PBS Only

Catalog Number: 32161-1-PBS



## Basic Information

<b>Catalog Number:</b> 32161-1-PBS	<b>GenBank Accession Number:</b> NM_019116	<b>Purification Method:</b> Antigen affinity Purification
<b>Source:</b> Rabbit	<b>GeneID (NCBI):</b> 56061	
<b>Isotype:</b> IgG	<b>UNIPROT ID:</b> O14562	
<b>Immunogen Catalog Number:</b> AG36361	<b>Full Name:</b> ubiquitin family domain containing 1	
	<b>Calculated MW:</b> 309aa, 33 kDa	
	<b>Observed MW:</b> 40 kDa	

## Applications

**Tested Applications:**  
WB, IF/ICC, Indirect ELISA

**Species Specificity:**  
human, mouse

## Background Information

UBFD1 (Ubiquitin Family Domain Containing 1) is a polyubiquitin-binding protein containing ubiquitin-like structural domains that are widely involved in protein degradation and cell signaling. This protein shows aberrant expression in a variety of cancers, especially in estrogen receptor (ER)-positive breast cancer, where high expression of UBFD1 is closely associated with poor prognosis of patients, and is considered as a potential prognostic biomarker and therapeutic target. In addition, UBFD1 was also found to be associated with MYC-mediated tumor aggressiveness in T-cell acute lymphoblastic leukemia (T-ALL), which functionally involves the endoplasmic reticulum-associated degradation (ERAD) pathway. UBFD1 is also expressed in inner ear hair cells and ear epithelial cells, suggesting that it may play a role in hearing-related diseases.

## Storage

**Storage:**  
Store at -80°C.  
**The product is shipped with ice packs. Upon receipt, store it immediately at -80°C**

**Storage Buffer:**  
PBS only, pH7.3

For technical support and original validation data for this product please contact:

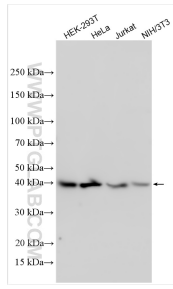
T: 4006900926

E: [Proteintech-CN@ptglab.com](mailto:Proteintech-CN@ptglab.com)

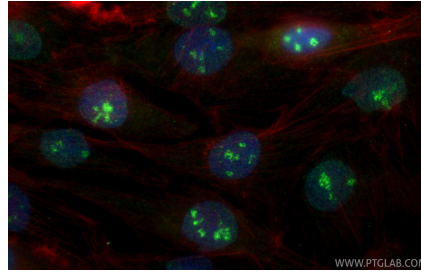
W: [ptgcn.com](http://ptgcn.com)

**This product is exclusively available under Proteintech Group brand and is not available to purchase from any other manufacturer.**

## Selected Validation Data



Various lysates were subjected to SDS PAGE followed by western blot with 32161-1-AP (UBFD1 antibody) at dilution of 1:2000 incubated at room temperature for 1.5 hours. This data was developed using the same antibody clone with 32161-1-PBS in a different storage buffer formulation.



Immunofluorescent analysis of (4% PFA) fixed ROS1728 cells using UBFD1 antibody (32161-1-AP) at dilution of 1:200 and CoraLite®488-Conjugated Goat Anti-Rabbit IgG(H+L) (SA00013-2), CL594-phalloidin (red). This data was developed using the same antibody clone with 32161-1-PBS in a different storage buffer formulation.