

For Research Use Only

# Klrb1a/CD161a Polyclonal antibody

Catalog Number:32132-1-AP



## Basic Information

Catalog Number:

32132-1-AP

Size:

450 ug/ml

Source:

Rabbit

Isotype:

IgG

GenBank Accession Number:

NM\_001010964.1

GeneID (NCBI):

362443

UNIPROT ID:

P27471

Full Name:

killer cell lectin-like receptor  
subfamily B, member 1A

Calculated MW:

25 kDa

Observed MW:

35 kDa

Purification Method:

Antigen affinity Purification

Recommended Dilutions:

WB 1:500-1:2000

## Applications

Tested Applications:

WB, ELISA

Species Specificity:

mouse, rat

Positive Controls:

WB : mouse spleen tissue, rat liver tissue

## Background Information

Rat klrb1a, also known as CD161a or NKR-PIA, is a type II membrane glycoprotein that belongs to the C-type lectin superfamily (PMID: 12618485). It is composed of an extracellular region, which contains a C-type lectin domain, a transmembrane region, and a cytoplasmic domain. Klrb1a is expressed on rat natural killer (NK) cells and functions as an activation receptor (PMID: 7722466; 12618485).

## Storage

Storage:

Store at -20°C. Stable for one year after shipment.

Storage Buffer:

PBS with 0.02% sodium azide and 50% glycerol pH 7.3.

Aliquoting is unnecessary for -20°C storage

For technical support and original validation data for this product please contact:

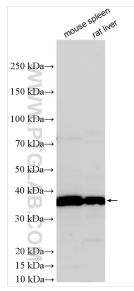
T: 4006900926

E: Proteintech-CN@ptglab.com

W: ptgcn.com

This product is exclusively available under Proteintech Group brand and is not available to purchase from any other manufacturer.

## Selected Validation Data



Various lysates were subjected to SDS PAGE followed by western blot with 32132-1-AP (Klrb1a/CD161a antibody) at dilution of 1:1000 incubated at room temperature for 1.5 hours.