

For Research Use Only

BCL9L Polyclonal antibody, PBS Only

Catalog Number: 32103-1-PBS



Basic Information

Catalog Number:

32103-1-PBS

Size:

1 mg/ml

Source:

Rabbit

Isotype:

IgG

Immunogen Catalog Number:

AG36794

GenBank Accession Number:

NM_182557

GeneID (NCBI):

283149

UNIPROT ID:

Q86UU0

Full Name:

B-cell CLL/lymphoma 9-like

Calculated MW:

157 kDa

Observed MW:

220 kDa

Purification Method:

Antigen affinity Purification

Applications

Tested Applications:

WB, IF/ICC, Indirect ELISA

Species Specificity:

human

Background Information

B-cell CLL/lymphoma 9-like protein (BCL9L, also known as B9L, BCL9-2, and DLNB11) is a transcriptional regulator that acts as an activator, which locates in nucleolus and nucleoplasm (PMID: 33767438). It is predicted to be implicated in the WNT- β -catenin signaling pathway to regulate the progress of hepatocellular carcinoma, breast cancer, and colon cancer (PMID: 31440992; 34545187; 30698996).

Storage

Storage:

Store at -80°C.

The product is shipped with ice packs. Upon receipt, store it immediately at -80°C

Storage Buffer:

PBS Only

For technical support and original validation data for this product please contact:

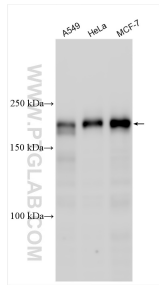
T: 4006900926

E: Proteintech-CN@ptglab.com

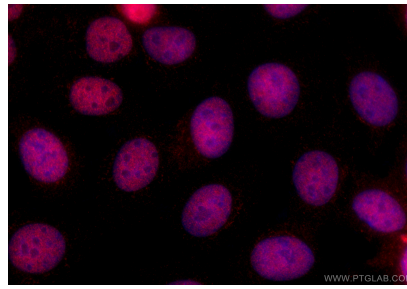
W: ptgcn.com

This product is exclusively available under Proteintech Group brand and is not available to purchase from any other manufacturer.

Selected Validation Data



Various lysates were subjected to SDS PAGE followed by western blot with 32103-1-AP (BCL9L antibody) at dilution of 1:2000 incubated at room temperature for 1.5 hours. This data was developed using the same antibody clone with 32103-1-PBS in a different storage buffer formulation.



Immunofluorescent analysis of (4% PFA) fixed MCF-7 cells using BCL9L antibody (32103-1-AP) at dilution of 1:800 and CoraLite®594-Conjugated Goat Anti-Rabbit IgG(H+L) (SA00013-4). This data was developed using the same antibody clone with 32103-1-PBS in a different storage buffer formulation.