

For Research Use Only

BCL9L Polyclonal antibody

Catalog Number: 32103-1-AP



Basic Information

Catalog Number:

32103-1-AP

Size:

450 ug/ml

Source:

Rabbit

Isotype:

IgG

Immunogen Catalog Number:

AG36794

GenBank Accession Number:

NM_182557

GeneID (NCBI):

283149

UNIPROT ID:

Q86UU0

Full Name:

B-cell CLL/lymphoma 9-like

Calculated MW:

157 kDa

Observed MW:

220 kDa

Purification Method:

Antigen affinity Purification

Recommended Dilutions:

WB 1:1000-1:4000

IF/ICC 1:400-1:1600

Applications

Tested Applications:

WB, IF/ICC, ELISA

Species Specificity:

human

Positive Controls:

WB : A549 cells, HeLa cells, MCF-7 cells

IF/ICC : MCF-7 cells,

Background Information

B-cell CLL/lymphoma 9-like protein (BCL9L, also known as B9L, BCL9-2, and DLNB11) is a transcriptional regulator that acts as an activator, which locates in nucleolus and nucleoplasm (PMID: 33767438). It is predicted to be implicated in the WNT- β -catenin signaling pathway to regulate the progress of hepatocellular carcinoma, breast cancer, and colon cancer (PMID: 31440992; 34545187; 30698996).

Storage

Storage:

Store at -20°C. Stable for one year after shipment.

Storage Buffer:

PBS with 0.02% sodium azide and 50% glycerol pH 7.3.

Aliquoting is unnecessary for -20°C storage

For technical support and original validation data for this product please contact:

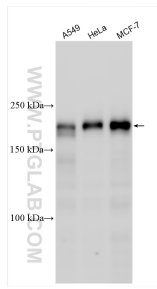
T: 4006900926

E: Proteintech-CN@ptglab.com

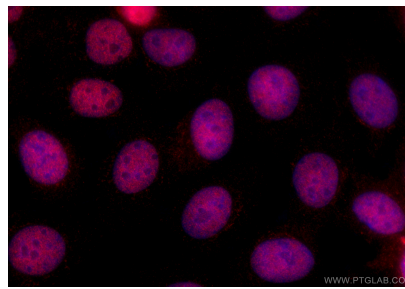
W: ptgcn.com

This product is exclusively available under Proteintech Group brand and is not available to purchase from any other manufacturer.

Selected Validation Data



Various lysates were subjected to SDS PAGE followed by western blot with 32103-1-AP (BCL9L antibody) at dilution of 1:2000 incubated at room temperature for 1.5 hours.



Immunofluorescent analysis of (4% PFA) fixed MCF-7 cells using BCL9L antibody (32103-1-AP) at dilution of 1:800 and CoraLite®594-Conjugated Goat Anti-Rabbit IgG(H+L) (SA00013-4).