

For Research Use Only

# FRY Polyclonal antibody

Catalog Number: 32075-1-AP



## Basic Information

<b>Catalog Number:</b> 32075-1-AP	<b>GenBank Accession Number:</b> NM_023037	<b>Purification Method:</b> Antigen affinity Purification
<b>Source:</b> Rabbit	<b>GeneID (NCBI):</b> 10129	<b>Recommended Dilutions:</b> WB: 1:500-1:3000 IHC: 1:150-1:600 IF/ICC: 1:200-1:800
<b>Isotype:</b> IgG	<b>UNIPROT ID:</b> Q5TBA9	
<b>Immunogen Catalog Number:</b> AG34959	<b>Full Name:</b> furry homolog (Drosophila)	
	<b>Calculated MW:</b> 339 kDa	
	<b>Observed MW:</b> 340 kDa	

## Applications

**Tested Applications:**  
WB, IHC, IF/ICC, ELISA

**Species Specificity:**  
human

**Note-IHC: suggested antigen retrieval with TE buffer pH 9.0; (\*) Alternatively, antigen retrieval may be performed with citrate buffer pH 6.0**

**Positive Controls:**

**WB :** THP-1 cells, RT-4 cells

**IHC :** human pancreas cancer tissue, human urothelial carcinoma tissue

**IF/ICC :** THP-1 cells,

## Background Information

The FRY gene encodes a protein involved in cell cycle regulation and DNA damage response. It plays a crucial role in the G2/M checkpoint, ensuring cells complete DNA repair before entering mitosis by activating the ATR-CHK1 signaling pathway. FRY is expressed in various tissues, including brain, liver, and testis, with notable expression in Sertoli and spermatogonial cells. Aberrant FRY function is associated with multiple diseases, such as cancer and neurodegenerative disorders. In cancer cells, FRY expression can influence proliferation and survival. Understanding FRY's role in cell cycle control and genome stability is vital for elucidating disease mechanisms and developing targeted therapies.

## Storage

**Storage:**  
Store at -20°C. Stable for one year after shipment.  
**Storage Buffer:**  
PBS with 0.02% sodium azide and 50% glycerol, pH7.3  
Aliquoting is unnecessary for -20°C storage

For technical support and original validation data for this product please contact:

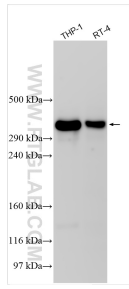
T: 4006900926

E: [Proteintech-CN@ptglab.com](mailto:Proteintech-CN@ptglab.com)

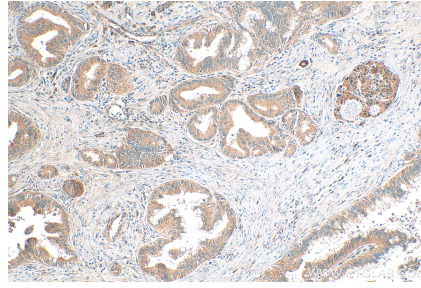
W: [ptgcn.com](http://ptgcn.com)

**This product is exclusively available under Proteintech Group brand and is not available to purchase from any other manufacturer.**

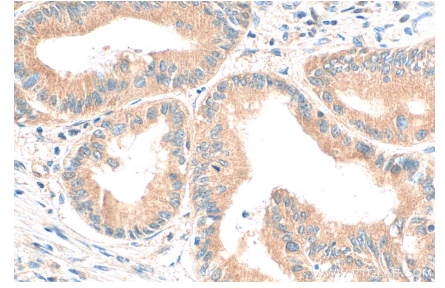
## Selected Validation Data



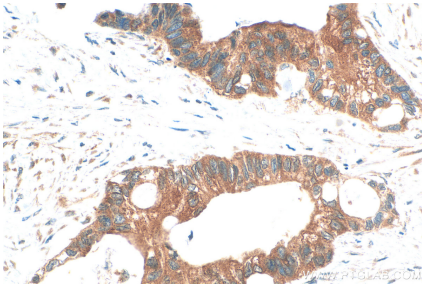
Various lysates were subjected to Tris-Acetate gel system followed by western blot with 32075-1-AP (FRY antibody) at dilution of 1:1500 incubated at room temperature for 1.5 hours.



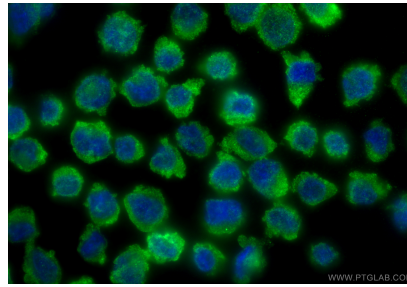
Immunohistochemical analysis of paraffin-embedded human pancreas cancer tissue slide using 32075-1-AP (FRY antibody) at dilution of 1:300 (under 10x lens). Heat mediated antigen retrieval with Tris-EDTA buffer (pH 9.0).



Immunohistochemical analysis of paraffin-embedded human pancreas cancer tissue slide using 32075-1-AP (FRY antibody) at dilution of 1:300 (under 40x lens). Heat mediated antigen retrieval with Tris-EDTA buffer (pH 9.0).



Immunohistochemical analysis of paraffin-embedded human urothelial carcinoma tissue slide using 32075-1-AP (FRY antibody) at dilution of 1:300 (under 40x lens). Heat mediated antigen retrieval with Tris-EDTA buffer (pH 9.0).



Immunofluorescent analysis of (4% PFA) fixed THP-1 cells using FRY antibody (32075-1-AP) at dilution of 1:400 and Coralite@488-Conjugated Goat Anti-Rabbit IgG(H+L) (SA00013-2).