

For Research Use Only

HECW2 Polyclonal antibody, PBS Only

Catalog Number: 32026-1-PBS



Basic Information

Catalog Number: 32026-1-PBS	GenBank Accession Number: XM_017004563.1	Purification Method: Antigen affinity Purification
Source: Rabbit	GeneID (NCBI): 57520	
Isotype: IgG	UNIPROT ID: Q9P2P5	
Immunogen Catalog Number: AG36316	Full Name: HECT, C2 and WW domain containing E3 ubiquitin protein ligase 2	
	Calculated MW: 176 kDa, 1572aa	
	Observed MW: 240 kDa	

Applications

Tested Applications:
WB, IHC, IF/ICC, Indirect ELISA

Species Specificity:
human

Background Information

HECW2, also known as NEDL2 (Nedd4-like E3 ubiquitin-protein ligase 2), is a member of the HECT (Homologous to the E6-AP Carboxyl Terminus) family of E3 ubiquitin ligases. It is crucial in various pathophysiological processes, including cell proliferation, apoptosis, autophagy, immune response, and DNA damage repair (PMID: 39529070). HECW2 is known to stabilize and enhance the transcriptional activity of p73, a member of the p53 family of tumor suppressors, which promotes cell cycle arrest and apoptosis and has an essential role in neurodevelopment (PMID: 27389779). In cancer, HECW2 is a promising target for tumor therapy due to its role in regulating cell cycle progression and angiogenesis (PMID: 39529070). In neurodevelopmental disorders, variants in HECW2 have been reported to cause a disorder characterized by hypotonia, seizures, and impaired language (PMID: 34321324).

Storage

Storage:
Store at -80°C.
The product is shipped with ice packs. Upon receipt, store it immediately at -80°C

Storage Buffer:
PBS only, pH7.3

For technical support and original validation data for this product please contact:

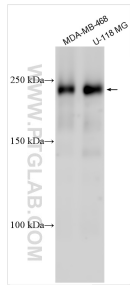
T: 4006900926

E: Proteintech-CN@ptglab.com

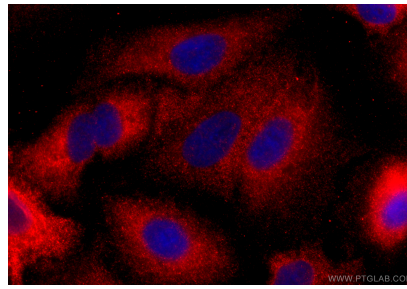
W: ptgcn.com

This product is exclusively available under Proteintech Group brand and is not available to purchase from any other manufacturer.

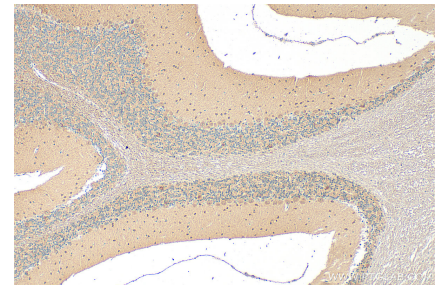
Selected Validation Data



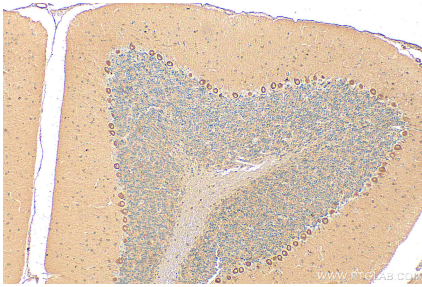
Various lysates were subjected to SDS PAGE followed by western blot with 32026-1-AP (HECW2 antibody) at dilution of 1:500 incubated at room temperature for 1.5 hours. This data was developed using the same antibody clone with 32026-1-PBS in a different storage buffer formulation.



Immunofluorescent analysis of (-20°C Methanol) fixed A549 cells using HECW2 antibody (32026-1-AP) at dilution of 1:400 and CoraLite®594-Conjugated Goat Anti-Rabbit IgG(H+L) (SA00013-4). This data was developed using the same antibody clone with 32026-1-PBS in a different storage buffer formulation.



Immunohistochemical analysis of paraffin-embedded mouse cerebellum tissue slide using 32026-1-AP (HECW2 antibody) at dilution of 1:200 (under 10x lens). Heat mediated antigen retrieval with Tris-EDTA buffer (pH 9.0). This data was developed using the same antibody clone with 32026-1-PBS in a different storage buffer formulation.



Immunohistochemical analysis of paraffin-embedded rat cerebellum tissue slide using 32026-1-AP (HECW2 antibody) at dilution of 1:200 (under 10x lens). Heat mediated antigen retrieval with Tris-EDTA buffer (pH 9.0). This data was developed using the same antibody clone with 32026-1-PBS in a different storage buffer formulation.