

For Research Use Only

KBTBD8 Polyclonal antibody, PBS Only

Catalog Number: 31970-1-PBS

Featured Product



Basic Information

Catalog Number:

31970-1-PBS

Size:

1 mg/ml

Source:

Rabbit

Isotype:

IgG

Immunogen Catalog Number:

AG36219

GenBank Accession Number:

NM_032505.2

GeneID (NCBI):

84541

UNIPROT ID:

Q8NFY9

Full Name:

kelch repeat and BTB (POZ) domain containing 8

Calculated MW:

69 kDa, 601aa

Observed MW:

60 kDa

Purification Method:

Antigen affinity Purification

Applications

Tested Applications:

WB, Indirect ELISA

Species Specificity:

human

Background Information

Kelch repeat and BTB domain containing 8 (KBTBD8, also known as TAKRP and TA-KRP) is a member of the BTB-kelch family of proteins, which is specifically localized at the Golgi apparatus in nondividing cells and becomes restricted to the spindle apparatus upon mitosis (PMID: 23578279). KBTBD family proteins are involved in ubiquitination in various cells and tissues and are correlated with human muscle diseases (PMID: 9878064; 16547521; 24959344). The expression level of KBTBD8 might affect the proliferation and migration of epithelial ovarian cancer (PMID: 33109073).

Storage

Storage:

Store at -80°C.

The product is shipped with ice packs. Upon receipt, store it immediately at -80°C

Storage Buffer:

PBS Only

For technical support and original validation data for this product please contact:

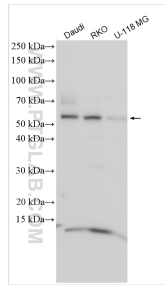
T: 4006900926

E: Proteintech-CN@ptglab.com

W: ptgcn.com

This product is exclusively available under Proteintech Group brand and is not available to purchase from any other manufacturer.

Selected Validation Data



Various lysates were subjected to SDS PAGE followed by western blot with 31970-1-AP (KBTBD8 antibody) at dilution of 1:1500 incubated at room temperature for 1.5 hours. This data was developed using the same antibody clone with 31970-1-PBS in a different storage buffer formulation.