

For Research Use Only

# CD2 Polyclonal antibody

Catalog Number: 31947-1-AP



## Basic Information

**Catalog Number:**

31947-1-AP

**Size:**

550 ug/ml

**Source:**

Rabbit

**Isotype:**

IgG

**GenBank Accession Number:**

NM\_013486.2

**GeneID (NCBI):**

12481

**UNIPROT ID:**

P08920

**Full Name:**

CD2 antigen

**Calculated MW:**

38 kDa

**Observed MW:**

60 kDa

**Purification Method:**

Antigen affinity Purification

**Recommended Dilutions:**

WB 1:2000-1:12000

## Applications

**Tested Applications:**

WB, ELISA

**Species Specificity:**

mouse, rat

**Positive Controls:**

WB : CTLL-2 cells, mouse spleen tissue, mouse thymus tissue, rat spleen tissue, rat thymus tissue

## Background Information

CD2 is a cell surface glycoprotein present on a majority of thymocytes, all mature T cells and subset of NK cells but not on B lymphocytes. It is a pan T-cell marker. CD2 interacts with lymphocyte function-associated antigen (LFA-3/CD58) and CD48/BCM1 to mediate adhesion between T-cells and other cell types. CD2 is implicated in the triggering of T-cells, the cytoplasmic domain is implicated in the signaling function.

## Storage

**Storage:**

Store at -20°C. Stable for one year after shipment.

**Storage Buffer:**

PBS with 0.02% sodium azide and 50% glycerol pH 7.3.

Aliquoting is unnecessary for -20°C storage

For technical support and original validation data for this product please contact:

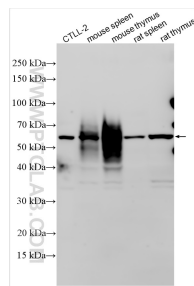
T: 4006900926

E: [Proteintech-CN@ptglab.com](mailto:Proteintech-CN@ptglab.com)

W: [ptgcn.com](http://ptgcn.com)

This product is exclusively available under Proteintech Group brand and is not available to purchase from any other manufacturer.

## Selected Validation Data



Various lysates were subjected to SDS PAGE followed by western blot with 31947-1-AP (CD2 antibody) at dilution of 1:6000 incubated at room temperature for 1.5 hours.