

For Research Use Only

# SPINT3 Polyclonal antibody, PBS Only

Catalog Number: 31931-1-PBS



## Basic Information

<b>Catalog Number:</b> 31931-1-PBS	<b>GenBank Accession Number:</b> NM_006652.1	<b>Purification Method:</b> Antigen affinity Purification
<b>Concentration:</b> 1 mg/ml	<b>GeneID (NCBI):</b> 10816	
<b>Source:</b> Rabbit	<b>UNIPROT ID:</b> P49223	
<b>Isotype:</b> IgG	<b>Full Name:</b> serine peptidase inhibitor, Kunitz type, 3	
<b>Immunogen Catalog Number:</b> AG35289	<b>Calculated MW:</b> 10 kDa	
	<b>Observed MW:</b> 35 kDa	

## Applications

**Tested Applications:**  
WB, IF/ICC, Indirect ELISA

**Species Specificity:**  
human, mouse, rat

## Background Information

Serine peptidase inhibitor, Kunitz type 3 (SPINT3, also known as HKIB9) might be related to serine-type endopeptidase inhibitor activity, receptor antagonist activity, and transforming growth factor beta binding (PMID: 21988899). The calculated molecular weight of SPINT3 is 10 kDa, which is lower than its observed molecular weight of 30-35 kDa by SDS-PAGE detection (PMID: 21988899).

## Storage

**Storage:**  
Store at -80°C.  
**The product is shipped with ice packs. Upon receipt, store it immediately at -80°C**

**Storage Buffer:**  
PBS only

For technical support and original validation data for this product please contact:

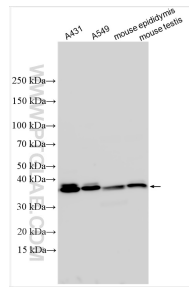
T: 4006900926

E: [Proteintech-CN@ptglab.com](mailto:Proteintech-CN@ptglab.com)

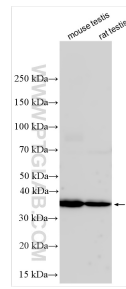
W: [ptgcn.com](http://ptgcn.com)

**This product is exclusively available under Proteintech Group brand and is not available to purchase from any other manufacturer.**

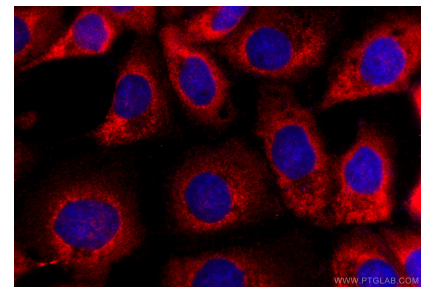
## Selected Validation Data



Various lysates were subjected to SDS PAGE followed by western blot with 31931-1-AP (SPINT3 antibody) at dilution of 1:3000 incubated at room temperature for 1.5 hours. This data was developed using the same antibody clone with 31931-1-PBS in a different storage buffer formulation.



Various lysates were subjected to SDS PAGE followed by western blot with 31931-1-AP (SPINT3 antibody) at dilution of 1:3000 incubated at room temperature for 1.5 hours. This data was developed using the same antibody clone with 31931-1-PBS in a different storage buffer formulation.



Immunofluorescent analysis of (-20°C Methanol) fixed A431 cells using SPINT3 antibody (31931-1-AP) at dilution of 1:400 and CoraLite®594-Conjugated Goat Anti-Rabbit IgG(H+L) (SA00013-4). This data was developed using the same antibody clone with 31931-1-PBS in a different storage buffer formulation.