

CLEC2L Polyclonal antibody

Catalog Number: 31928-1-AP

Basic Information

Catalog Number:

31928-1-AP

Size:

400 ug/ml

Source:

Rabbit

Isotype:

IgG

Immunogen Catalog Number:

AG35450

GenBank Accession Number:

NM_001080511.2

GeneID (NCBI):

154790

UNIPROT ID:

POC7M8

Full Name:

C-type lectin domain family 2, member L

Calculated MW:

24 kDa

Observed MW:

38 kDa

Purification Method:

Antigen affinity Purification

Recommended Dilutions:

WB 1:500-1:3000

IHC 1:50-1:500

Applications

Tested Applications:

WB, IHC, ELISA

Species Specificity:

mouse, rat

Note-IHC: suggested antigen retrieval with TE buffer pH 9.0; (*) Alternatively, antigen retrieval may be performed with citrate buffer pH 6.0

Positive Controls:

WB : mouse skeletal muscle tissue, rat skeletal muscle tissue

IHC : mouse cerebellum tissue, mouse skeletal muscle tissue

Background Information

C-type lectin domain family 2 member L (CLEC2L) is a membrane protein mainly expressed in brain tissue and probably has carbohydrate-binding activity. The CLEC2L-encoded C-type lectin-like receptors (CTLRs) are expressed as non-glycosylated, disulfide-linked homodimers at the cell surface, and designated as BACL (brain-associated C-type lectin) (PMID: 23776472). The CLEC2L protein has 214 amino acids with a predicted molecular mass of 23.9 kDa. Under non-reducing conditions, FLAG-tagged CLEC2L proteins appeared with a molecular mass of ~55 kDa in immunoblots because of the occurrence of disulfide-linked homodimers (PMID: 23776472).

Storage

Storage:

Store at -20°C. Stable for one year after shipment.

Storage Buffer:

PBS with 0.02% sodium azide and 50% glycerol pH 7.3.

Aliquoting is unnecessary for -20°C storage

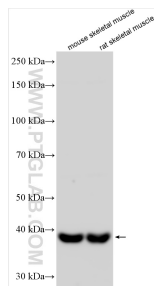
For technical support and original validation data for this product please contact:

T: 4006900926

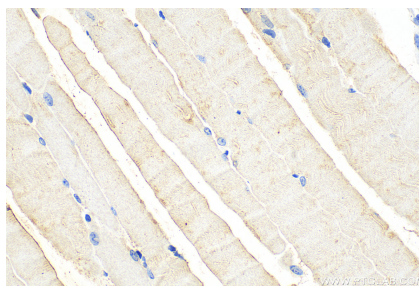
E: Proteintech-CN@ptglab.comW: ptgcn.com

This product is exclusively available under Proteintech Group brand and is not available to purchase from any other manufacturer.

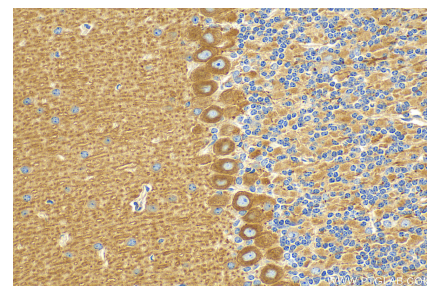
Selected Validation Data



Various lysates were subjected to SDS PAGE followed by western blot with 31928-1-AP (CLEC2L antibody) at dilution of 1:1500 incubated at room temperature for 1.5 hours.



Immunohistochemical analysis of paraffin-embedded mouse skeletal muscle tissue slide using 31928-1-AP (CLEC2L antibody) at dilution of 1:200 (under 40x lens). Heat mediated antigen retrieval with Tris-EDTA buffer (pH 9.0).



Immunohistochemical analysis of paraffin-embedded mouse cerebellum tissue slide using 31928-1-AP (CLEC2L antibody) at dilution of 1:200 (under 40x lens). Heat mediated antigen retrieval with Tris-EDTA buffer (pH 9.0).