

For Research Use Only

# TMEM143 Polyclonal antibody, PBS Only

Catalog Number: 31917-1-PBS



## Basic Information

<b>Catalog Number:</b> 31917-1-PBS	<b>GenBank Accession Number:</b> BC016919	<b>Purification Method:</b> Antigen affinity Purification
<b>Source:</b> Rabbit	<b>GeneID (NCBI):</b> 55260	
<b>Isotype:</b> IgG	<b>UNIPROT ID:</b> Q96AN5	
<b>Immunogen Catalog Number:</b> AG36277	<b>Full Name:</b> transmembrane protein 143	
	<b>Calculated MW:</b> 52 kDa	
	<b>Observed MW:</b> 45-52 kDa	

## Applications

**Tested Applications:**  
WB, IHC, Indirect ELISA

**Species Specificity:**  
human

## Background Information

Transmembrane protein 143 (TMEM143) is a transmembrane protein and a member of the TMEM (Transmembrane) protein family, which is located in mitochondria (PMID: 11256614). It is known that members of the TMEM family play an important role in the development and metastasis of cancer, especially in conveying information between the extracellular environment and cytoplasmic proteins (PMID: 31454669).

## Storage

**Storage:**  
Store at -80°C.  
**The product is shipped with ice packs. Upon receipt, store it immediately at -80°C**

**Storage Buffer:**  
PBS only, pH7.3

For technical support and original validation data for this product please contact:

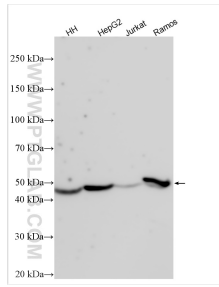
T: 4006900926

E: [Proteintech-CN@ptglab.com](mailto:Proteintech-CN@ptglab.com)

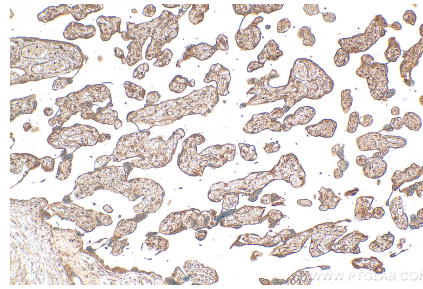
W: [ptgcn.com](http://ptgcn.com)

**This product is exclusively available under Proteintech Group brand and is not available to purchase from any other manufacturer.**

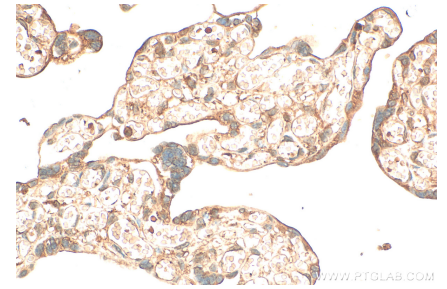
## Selected Validation Data



Various lysates were subjected to SDS PAGE followed by western blot with 31917-1-AP (TMEM143 antibody) at dilution of 1:800 incubated at room temperature for 1.5 hours. This data was developed using the same antibody clone with 31917-1-PBS in a different storage buffer formulation.



Immunohistochemical analysis of paraffin-embedded human placenta tissue slide using 31917-1-AP (TMEM143 antibody) at dilution of 1:200 (under 10x lens). Heat mediated antigen retrieval with Tris-EDTA buffer (pH 9.0). This data was developed using the same antibody clone with 31917-1-PBS in a different storage buffer formulation.



Immunohistochemical analysis of paraffin-embedded human placenta tissue slide using 31917-1-AP (TMEM143 antibody) at dilution of 1:200 (under 40x lens). Heat mediated antigen retrieval with Tris-EDTA buffer (pH 9.0). This data was developed using the same antibody clone with 31917-1-PBS in a different storage buffer formulation.