

For Research Use Only

# KCNA6 Polyclonal antibody

Catalog Number: 31900-1-AP



## Basic Information

Catalog Number:

31900-1-AP

Concentration:

550 ug/ml

Source:

Rabbit

Isotype:

IgG

Immunogen Catalog Number:

AG35654

GenBank Accession Number:

NM\_002235.3

GeneID (NCBI):

3742

UNIPROT ID:

P17658

Full Name:

potassium voltage-gated channel,  
shaker-related subfamily, member 6

Calculated MW:

59 kDa, 529aa

Observed MW:

65 kDa

Purification Method:

Antigen affinity Purification

Recommended Dilutions:

WB 1:500-1:1000

## Applications

Tested Applications:

WB, ELISA

Species Specificity:

human

Positive Controls:

WB : Daudi cells, Jurkat cells, Raji cells, TT cells, U2OS cells

## Background Information

The Shaker-like Kv1 potassium channel family comprises 8  $\alpha$  subunits (Kv1.1-Kv1.8), which are key regulators of neuronal excitability in mammals (PMID: 7842011; 9581771; 22612818). Potassium voltage-gated channel subfamily A member 6 (KCNA6, also known as HBK2, Kv1.6, and PPP1R96) is a multi-pass membrane protein that is mainly expressed in the central and peripheral nervous system (PMID: 12042352; 8872310). The concentration of the Kv1.6 channel in the cell membrane can modulate the kinetic properties of Kv1.6-induced K<sup>+</sup> current (PMID: 14575698).

## Storage

Storage:

Store at -20°C. Stable for one year after shipment.

Storage Buffer:

PBS with 0.02% sodium azide and 50% glycerol pH 7.3.

Aliquoting is unnecessary for -20°C storage

For technical support and original validation data for this product please contact:

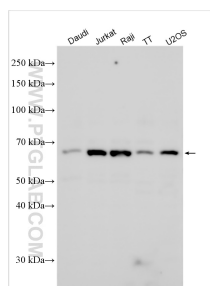
T: 4006900926

E: [Proteintech-CN@ptglab.com](mailto:Proteintech-CN@ptglab.com)

W: [ptgcn.com](http://ptgcn.com)

This product is exclusively available under Proteintech Group brand and is not available to purchase from any other manufacturer.

## Selected Validation Data



Various lysates were subjected to SDS PAGE followed by western blot with 31900-1-AP (KCNA6 antibody) at dilution of 1:800 incubated at room temperature for 1.5 hours.