

For Research Use Only

# GPR158 Polyclonal antibody

Catalog Number: 31846-1-AP



## Basic Information

**Catalog Number:**

31846-1-AP

**Size:**

750 ug/ml

**Source:**

Rabbit

**Isotype:**

IgG

**Immunogen Catalog Number:**

AG34602

**GenBank Accession Number:**

BC157124

**GeneID (NCBI):**

57512

**UNIPROT ID:**

Q5T848

**Full Name:**

G protein-coupled receptor 158

**Calculated MW:**

135 kDa

**Observed MW:**

150 kDa

**Purification Method:**

Antigen affinity Purification

**Recommended Dilutions:**

WB 1:500-1:2000

## Applications

**Tested Applications:**

WB, ELISA

**Species Specificity:**

human

**Positive Controls:**

WB : HEK-293T cells, HeLa cells

## Background Information

G protein-coupled receptors (GPCR) are the largest family of proteins encoded in mammalian genomes that detect extracellular signals to program cellular response, which are essential to understanding physiology, disease, and drug development (PMID: 29249361; 29298813). G protein-coupled receptor 158 (GPR158, also known as mGlyR) is a class C orphan GPCR prominently expressed in brain tissue, where it controls synapse formation and function (PMID: 22689652; 34793198). It can transduce signals by coupling to the regulator of protein signaling (RGS) proteins and be related to the development of major depressive disorder and prostate cancer (PMID: 36996198; 29419376; 25693195).

## Storage

**Storage:**

Store at -20°C. Stable for one year after shipment.

**Storage Buffer:**

PBS with 0.02% sodium azide and 50% glycerol pH 7.3.

Aliquoting is unnecessary for -20°C storage

For technical support and original validation data for this product please contact:

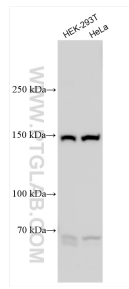
T: 4006900926

E: [Proteintech-CN@ptglab.com](mailto:Proteintech-CN@ptglab.com)

W: [ptgcn.com](http://ptgcn.com)

This product is exclusively available under Proteintech Group brand and is not available to purchase from any other manufacturer.

## Selected Validation Data



Various lysates were subjected to SDS PAGE followed by western blot with 31846-1-AP (GPR158 antibody) at dilution of 1:1000 incubated at room temperature for 1.5 hours.