

For Research Use Only

# SYTL1 Polyclonal antibody, PBS Only

Catalog Number: 31834-1-PBS



## Basic Information

Catalog Number:

31834-1-PBS

Source:

Rabbit

Isotype:

IgG

Immunogen Catalog Number:

AG27391

GenBank Accession Number:

BC015764

GeneID (NCBI):

84958

UNIPROT ID:

Q8IYJ3

Full Name:

synaptotagmin-like 1

Calculated MW:

62 kDa

Observed MW:

70 kDa

Purification Method:

Antigen affinity Purification

## Applications

Tested Applications:

WB, Indirect ELISA

Species Specificity:

human

## Background Information

Synaptotagmin-like protein 1 (SYTL1, also known as SLP1 and Exophilin-7) is a protein that plays a crucial role in vesicle trafficking and exocytosis. SYTL1 differentially regulates the secretion of prostate-specific antigen and prostatic-specific acid phosphatase (PMID: 36653850). The expression level of SYTL1 is also associated with bladder cancer progression (PMID: 36107384).

## Storage

Storage:

Store at -80°C.

**The product is shipped with ice packs. Upon receipt, store it immediately at -80°C**

Storage Buffer:

PBS only, pH7.3

For technical support and original validation data for this product please contact:

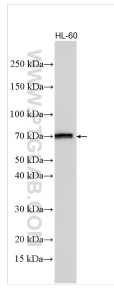
T: 4006900926

E: [Proteintech-CN@ptglab.com](mailto:Proteintech-CN@ptglab.com)

W: [ptgcn.com](http://ptgcn.com)

**This product is exclusively available under Proteintech Group brand and is not available to purchase from any other manufacturer.**

## Selected Validation Data



Various lysates were subjected to SDS PAGE followed by western blot with 31834-1-AP (SYTL1 antibody) at dilution of 1:3000 incubated at room temperature for 1.5 hours. This data was developed using the same antibody clone with 31834-1-PBS in a different storage buffer formulation.