

For Research Use Only

KBTBD6 Polyclonal antibody, PBS Only

Catalog Number: 31743-1-PBS



Basic Information

Catalog Number:

31743-1-PBS

Concentration:

1 mg/ml

Source:

Rabbit

Isotype:

IgG

Immunogen Catalog Number:

AG36046

GenBank Accession Number:

BC000560

GeneID (NCBI):

89890

UNIPROT ID:

Q86V97

Full Name:

kelch repeat and BTB (POZ) domain
containing 6

Observed MW:

76 kDa

Purification Method:

Antigen affinity Purification

Applications

Tested Applications:

WB, Indirect ELISA

Species Specificity:

human

Background Information

KBTBD6 (Kelch repeat and BTB domain-containing protein 6) is involved in proteasome-mediated ubiquitin-dependent protein catabolic process; protein K48-linked ubiquitination; and Rac protein signal transduction regulation.

Storage

Storage:

Store at -80°C.

The product is shipped with ice packs. Upon receipt, store it immediately at -80°C

Storage Buffer:

PBS only, pH7.3

For technical support and original validation data for this product please contact:

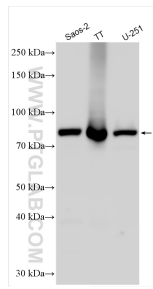
T: 4006900926

E: Proteintech-CN@ptglab.com

W: ptgcn.com

This product is exclusively available under Proteintech Group brand and is not available to purchase from any other manufacturer.

Selected Validation Data



Various lysates were subjected to SDS PAGE followed by western blot with 31743-1-AP (KBTBD6 antibody) at dilution of 1:1000 incubated at room temperature for 1.5 hours. This data was developed using the same antibody clone with 31743-1-PBS in a different storage buffer formulation.