

For Research Use Only

# CDK5RAP2 Polyclonal antibody, PBS Only

Catalog Number: 31702-1-PBS



## Basic Information

Catalog Number:

31702-1-PBS

Source:

Rabbit

Isotype:

IgG

Immunogen Catalog Number:

AG36245

GenBank Accession Number:

BC146782

GeneID (NCBI):

55755

UNIPROT ID:

Q96SN8

Full Name:

CDK5 regulatory subunit associated protein 2

Calculated MW:

1893 aa, 215 kDa

Observed MW:

210-215 kDa

Purification Method:

Antigen affinity Purification

## Applications

Tested Applications:

WB, Indirect ELISA

Species Specificity:

human

## Background Information

Cyclin-dependent kinase 5 regulatory subunit associated protein 2 (CDK5RAP2) is a pericentriolar matrix (PCM) protein that regulates centriole engagement and centrosome cohesion during the cell cycle. CDK5RAP2 is associated with several cancers, including breast cancer, oral squamous cell carcinoma and haematological malignancies.

## Storage

Storage:

Store at -80°C.

The product is shipped with ice packs. Upon receipt, store it immediately at -80°C

Storage Buffer:

PBS only, pH7.3

For technical support and original validation data for this product please contact:

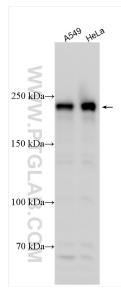
T: 4006900926

E: [Proteintech-CN@ptglab.com](mailto:Proteintech-CN@ptglab.com)

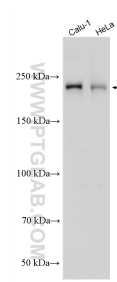
W: [ptgcn.com](http://ptgcn.com)

This product is exclusively available under Proteintech Group brand and is not available to purchase from any other manufacturer.

## Selected Validation Data



Various lysates were subjected to SDS PAGE followed by western blot with 31702-1-AP (CDK5RAP2 antibody) at dilution of 1:800 incubated at room temperature for 1.5 hours. This data was developed using the same antibody clone with 31702-1-PBS in a different storage buffer formulation.



Various lysates were subjected to SDS PAGE followed by western blot with 31702-1-AP (CDK5RAP2 antibody) at dilution of 1:1000 incubated at room temperature for 1.5 hours. This data was developed using the same antibody clone with 31702-1-PBS in a different storage buffer formulation.