

# CWF19L1 Polyclonal antibody

Catalog Number: 31700-1-AP

## Basic Information

**Catalog Number:**

31700-1-AP

**Size:**

500 µg/ml

**Source:**

Rabbit

**Isotype:**

IgG

**Immunogen Catalog Number:**

AG36356

**GenBank Accession Number:**

BC008746

**GeneID (NCBI):**

55280

**UNIPROT ID:**

Q69YN2

**Full Name:**

CWF19-like 1, cell cycle control (S. pombe)

**Observed MW:**

60-65 kDa

**Purification Method:**

Antigen affinity Purification

**Recommended Dilutions:**

WB 1:5000-1:50000

## Applications

**Tested Applications:**

WB, ELISA

**Species Specificity:**

human

**Positive Controls:**

WB : Jurkat cells, K-562 cells, MCF-7 cells

## Background Information

CWF19L1 belongs to the CWF19 family. CWF19L1 includes a metallophosphatase (MMP) domain, a histidine triad motif (HIT) domain, and a C-terminal Cwf-J-C domain. CWF19L1 is believed to be involved in cell cycle control, endosomal trafficking, and mRNA processing. CWF19L1 is a rare cause of autosomal recessive cerebellar ataxias (ARCA) (PMID: 36357319, PMID: 36453471). CWF19L1 is expressed in many brain regions, including cerebellum, thalamus and occipital, parietal and temporal lobes. CWF19L1 is also expressed in the spinal cord (PMID: 25361784).

## Storage

**Storage:**

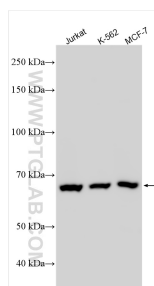
Store at -20°C. Stable for one year after shipment.

**Storage Buffer:**

PBS with 0.02% sodium azide and 50% glycerol pH 7.3.

Aliquoting is unnecessary for -20°C storage

## Selected Validation Data



Various lysates were subjected to SDS PAGE followed by western blot with 31700-1-AP (CWF19L1 antibody) at dilution of 1:15000 incubated at room temperature for 1.5 hours.