

For Research Use Only

# Talin-2 Polyclonal antibody, PBS Only

Catalog Number: 31695-1-PBS



## Basic Information

Catalog Number:

31695-1-PBS

Source:

Rabbit

Isotype:

IgG

Immunogen Catalog Number:

AG36217

GenBank Accession Number:

NM\_015059

GeneID (NCBI):

83660

UNIPROT ID:

Q9Y4G6

Full Name:

talin 2

Calculated MW:

271kDa

Observed MW:

250 kDa

Purification Method:

Antigen affinity Purification

## Applications

Tested Applications:

WB, Indirect ELISA

Species Specificity:

human

## Background Information

Talin is a macromolecular cytoskeleton protein located on the extracellular matrix (ECM) that can bind to a variety of adhesion molecules (e.g., integrin, actin, and adhesion kinase). Humans have two Talin genes, TLN1 and TLN2, which encode Talin 1 and Talin 2 proteins respectively. TLN2 has 74% homology with TLN1.

## Storage

Storage:

Store at -80°C.

**The product is shipped with ice packs. Upon receipt, store it immediately at -80°C**

Storage Buffer:

PBS only, pH7.3

For technical support and original validation data for this product please contact:

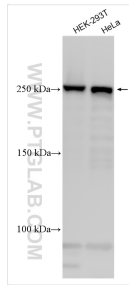
T: 4006900926

E: [Proteintech-CN@ptglab.com](mailto:Proteintech-CN@ptglab.com)

W: [ptgcn.com](http://ptgcn.com)

**This product is exclusively available under Proteintech Group brand and is not available to purchase from any other manufacturer.**

## Selected Validation Data



Various lysates were subjected to SDS PAGE followed by western blot with 31695-1-AP (TLN2 antibody) at dilution of 1:800 incubated at room temperature for 1.5 hours. This data was developed using the same antibody clone with 31695-1-PBS in a different storage buffer formulation.