

ATP2B3/PMCA3 Polyclonal antibody

Catalog Number: 31692-1-AP

Basic Information

Catalog Number:

31692-1-AP

Size:

450 µg/ml

Source:

Rabbit

Isotype:

IgG

Immunogen Catalog Number:

AG35923

GenBank Accession Number:

BC047580

GeneID (NCBI):

492

UNIPROT ID:

Q16720

Full Name:

ATPase, Ca⁺⁺ transporting, plasma membrane 3

Observed MW:

134 kDa

Purification Method:

Antigen affinity Purification

Recommended Dilutions:

WB 1:1000-1:8000

Applications

Tested Applications:

WB, ELISA

Species Specificity:

human, mouse, rat

Positive Controls:

WB : 37°C incubated mouse brain tissue, 37°C incubated rat brain tissue

Background Information

ATP2B3 also known as PMCA3, belongs to the family of P-type primary ion transport ATPases. ATP2B3 uses ATP as an energy source to transport cytosolic Ca²⁺ ions across the plasma membrane to the extracellular compartment. ATP2B3 is highly expressed in the brain and cerebellum and is important in regulating neuronal Ca²⁺. Mutations in ATP2B3 are associated with X-linked spinocerebellar ataxia-1 (PMID: 25953895, 22912398).

Storage

Storage:

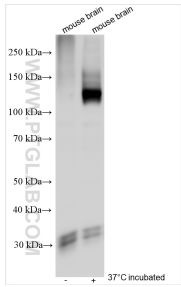
Store at -20°C. Stable for one year after shipment.

Storage Buffer:

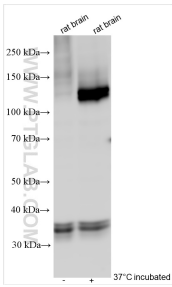
PBS with 0.02% sodium azide and 50% glycerol pH 7.3.

Aliquoting is unnecessary for -20°C storage

Selected Validation Data



Various lysates were subjected to SDS PAGE followed by western blot with 31692-1-AP (ATP2B3/PMCA3 antibody) at dilution of 1:4000 incubated at room temperature for 1.5 hours.



Various lysates were subjected to SDS PAGE followed by western blot with 31692-1-AP (ATP2B3/PMCA3 antibody) at dilution of 1:4000 incubated at room temperature for 1.5 hours.