

For Research Use Only

ARFGEF1 Polyclonal antibody

Catalog Number: 31684-1-AP



Basic Information

Catalog Number:

31684-1-AP

Size:

400 ug/ml

Source:

Rabbit

Isotype:

IgG

Immunogen Catalog Number:

AG35629

GenBank Accession Number:

NM_001413184

GeneID (NCBI):

10565

UNIPROT ID:

Q9Y6D6

Full Name:

ADP-ribosylation factor guanine nucleotide-exchange factor 1 (brefeldin A-inhibited)

Calculated MW:

208kDa

Observed MW:

210 kDa

Purification Method:

Antigen affinity Purification

Recommended Dilutions:

WB 1:500-1:2000

IHC 1:50-1:500

Applications

Tested Applications:

WB, IHC, ELISA

Species Specificity:

human, mouse

Note-IHC: suggested antigen retrieval with TE buffer pH 9.0; (*) Alternatively, antigen retrieval may be performed with citrate buffer pH 6.0

Positive Controls:

WB : BxPC-3 cells, HEK-293T cells, HeLa cells, NIH/3T3 cells, mouse lung tissue

IHC : human ovary cancer tissue,

Background Information

ARFGEF1 (ADP ribosylation factor guanine nucleotide exchange factor 1), also known as BIG1 (Brefeldin A-inhibited guanine nucleotide exchange protein 1), is one of the ADP ribosylation factor (ARF) guanine nucleotide exchange factor (GEF) with a conserved catalytic sec7 domain. ARFGEF1 is connected with trafficking regulation through the trans-Golgi network and endosomes (PMID: 35090882).

Storage

Storage:

Store at -20°C. Stable for one year after shipment.

Storage Buffer:

PBS with 0.02% sodium azide and 50% glycerol pH 7.3.

Aliquoting is unnecessary for -20°C storage

For technical support and original validation data for this product please contact:

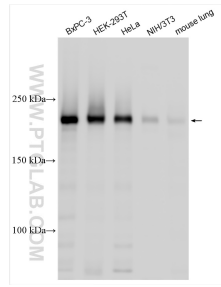
T: 4006900926

E: Proteintech-CN@ptglab.com

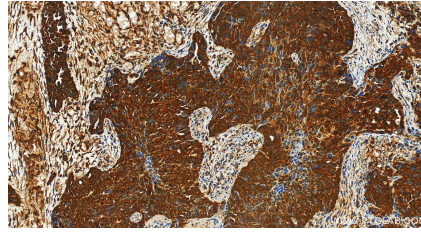
W: ptgcn.com

This product is exclusively available under Proteintech Group brand and is not available to purchase from any other manufacturer.

Selected Validation Data



Various lysates were subjected to SDS PAGE followed by western blot with 31684-1-AP (ARFGEF1 antibody) at dilution of 1:1000 incubated at room temperature for 1.5 hours.



Immunohistochemical analysis of paraffin-embedded human ovary cancer tissue slide using 31684-1-AP (ARFGEF1 antibody) at dilution of 1:200 (under 20x lens). Heat mediated antigen retrieval with Tris-EDTA buffer (pH 9.0).