

For Research Use Only

LYRM2 Polyclonal antibody

Catalog Number: 31674-1-AP



Basic Information

Catalog Number:

31674-1-AP

Source:

Rabbit

Isotype:

IgG

Immunogen Catalog Number:

AG36366

GenBank Accession Number:

BC009782

GeneID (NCBI):

57226

UNIPROT ID:

Q9NU23

Full Name:

LYR motif containing 2

Observed MW:

10 kDa

Purification Method:

Antigen affinity Purification

Recommended Dilutions:

IP: 0.5-4.0 ug for 1.0-3.0 mg of total protein lysate

Applications

Tested Applications:

IP, ELISA

Species Specificity:

human

Positive Controls:

IP : HT-29 cells, COLO 320 cells

Background Information

LYR motif containing 2 (LYRM2) is an evolutionarily conserved gene which belongs to LYR (Leucine-tyrosine-arginine) motif proteins (LYRMs) family. LYRM2 is the one of the top ten most significantly upregulated differentially expressed genes in trabecular osteocytes between osteoporosis and normal controls (PMID: 34252604), which is up-regulated in colorectal cancer and promotes tumor growth both in vivo and in vitro. LYRM2 locates in the mitochondrial inner membrane and matrix (PMID: 31004700).

Storage

Storage:

Store at -20°C. Stable for one year after shipment.

Storage Buffer:

PBS with 0.02% sodium azide and 50% glycerol, pH7.3

Aliquoting is unnecessary for -20°C storage

For technical support and original validation data for this product please contact:

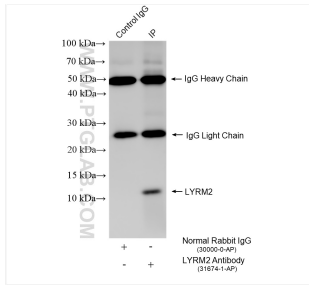
T: 4006900926

E: Proteintech-CN@ptglab.com

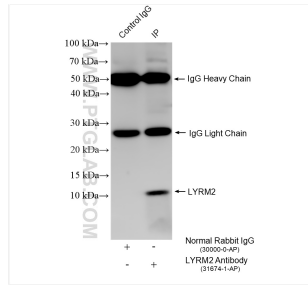
W: ptgcn.com

This product is exclusively available under Proteintech Group brand and is not available to purchase from any other manufacturer.

Selected Validation Data



IP result of anti-LYRM2 (IP:31674-1-AP, 4ug;
Detection:31674-1-AP 1:500) with COLO 320 cells
lysate 1920 ug.



IP result of anti-LYRM2 (IP:31674-1-AP, 4ug;
Detection:31674-1-AP 1:500) with HT-29 cells
lysate 1760 ug.