

# CSMD2 Polyclonal antibody

Catalog Number: 31573-1-AP

## Basic Information

**Catalog Number:**

31573-1-AP

**Size:**

400 µg/ml

**Source:**

Rabbit

**Isotype:**

IgG

**Immunogen Catalog Number:**

AG36106

**GenBank Accession Number:**

NM\_001281956

**GeneID (NCBI):**

114784

**UNIPROT ID:**

Q7Z408

**Full Name:**

CUB and Sushi multiple domains 2

**Calculated MW:**

380kDa

**Observed MW:**

380 kDa

**Purification Method:**

Antigen affinity Purification

**Recommended Dilutions:**

WB 1:500-1:1000

## Applications

**Tested Applications:**

WB, ELISA

**Species Specificity:**

Human, mouse, rat

**Positive Controls:**

WB : mouse brain tissue, rat brain tissue

## Background Information

CUB and sushi multiple domains 2 (CSMD2), located on the short arm of human chromosome 1 (1p35.1), encodes a single-pass transmembrane protein with a large extracellular domain consisting of CUB and Sushi domain repeats. CSMD2 is highly expressed in the developing and mature brain and has been linked to schizophrenia (PMID:31068362). The full-length molecular weight of CSMD2 protein is 380 kDa.

## Storage

**Storage:**

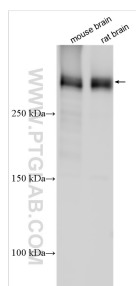
Store at -20°C. Stable for one year after shipment.

**Storage Buffer:**

PBS with 0.02% sodium azide and 50% glycerol pH 7.3.

Aliquoting is unnecessary for -20°C storage

## Selected Validation Data



Various lysates were subjected to SDS PAGE followed by western blot with 31573-1-AP (CSMD2 antibody) at dilution of 1:800 incubated at room temperature for 1.5 hours.