

PPEF2 Polyclonal antibody

Catalog Number: 31543-1-AP

Basic Information

Catalog Number:

31543-1-AP

Size:

450 µg/ml

Source:

Rabbit

Isotype:

IgG

Immunogen Catalog Number:

AG35922

GenBank Accession Number:

NM_006239

GeneID (NCBI):

5470

UNIPROT ID:

O14830

Full Name:

protein phosphatase, EF-hand calcium binding domain 2

Calculated MW:

86kDa

Observed MW:

69 kDa

Purification Method:

Antigen affinity Purification

Recommended Dilutions:

WB 1:500-1:1000

Applications

Tested Applications:

WB, ELISA

Species Specificity:

human, mouse, rat

Positive Controls:

WB : mouse kidney tissue, rat kidney tissue

Background Information

Protein phosphatase with EF-hand domain 2 (PPEF2), also known as PPP7CB, is a member of the serine/threonine protein phosphatase with EF-hand motif family. PPEF2 can dephosphorylate ubiquitin and suppress PINK1-dependent mitophagy. PPEF2 functions to suppress mitochondrial quality control on a cellular level through dephosphorylation of p-S65 ubiquitin. PPEF2 exists 2 isoforms produced by alternative splicing with a molecular weight of 86 kDa (PPEF-2(L)) and 69 kDa (PPEF-2(S)).

Storage

Storage:

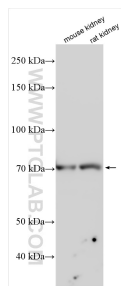
Store at -20°C. Stable for one year after shipment.

Storage Buffer:

PBS with 0.02% sodium azide and 50% glycerol pH 7.3.

Aliquoting is unnecessary for -20°C storage

Selected Validation Data



Various lysates were subjected to SDS PAGE followed by western blot with 31543-1-AP (PPEF2 antibody) at dilution of 1:600 incubated at room temperature for 1.5 hours.