

For Research Use Only

# TMEM258 Polyclonal antibody, PBS Only

Catalog Number: 31525-1-PBS



## Basic Information

Catalog Number:

31525-1-PBS

Concentration:

1 mg/ml

Source:

Rabbit

Isotype:

IgG

Immunogen Catalog Number:

AG35142

GenBank Accession Number:

BC015968

GeneID (NCBI):

746

UNIPROT ID:

P61165

Full Name:

chromosome 11 open reading frame

10

Observed MW:

10 and 16 kDa

Purification Method:

Antigen affinity Purification

## Applications

Tested Applications:

WB, IHC, Indirect ELISA

Species Specificity:

human

## Background Information

TMEM258, or transmembrane protein 258, is a component of the oligosaccharyltransferase (OST) complex. Research has shown that TMEM258 is involved in controlling ER stress and intestinal inflammation. In particular, it has been identified as a central regulator of intestinal homeostasis. The loss of TMEM258 leads to unresolved ER stress, which can result in apoptosis (PMID: 27974209). The calculated MW is 9 kDa, The observed MW is multiple bands, which may be caused by Glycosylation modification.

## Storage

Storage:

Store at -80°C.

**The product is shipped with ice packs. Upon receipt, store it immediately at -80°C**

Storage Buffer:

PBS only, pH7.3

For technical support and original validation data for this product please contact:

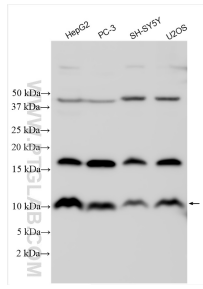
T: 4006900926

E: [Proteintech-CN@ptglab.com](mailto:Proteintech-CN@ptglab.com)

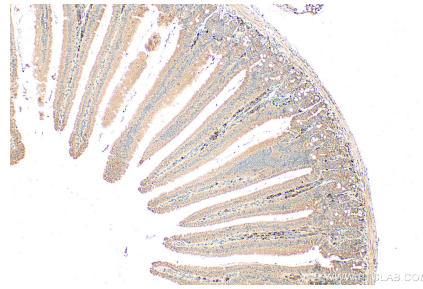
W: [ptgcn.com](http://ptgcn.com)

**This product is exclusively available under Proteintech Group brand and is not available to purchase from any other manufacturer.**

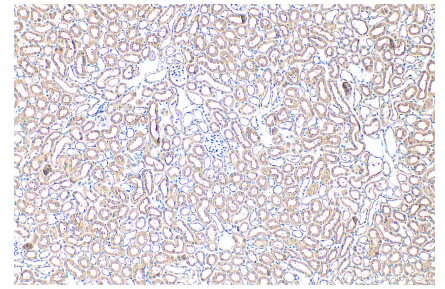
## Selected Validation Data



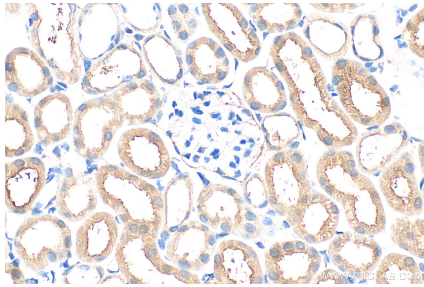
Various lysates were subjected to SDS PAGE followed by western blot with 31525-1-AP (TMEM258 antibody) at dilution of 1:1000 incubated at room temperature for 1.5 hours. This data was developed using the same antibody clone with 31525-1-PBS in a different storage buffer formulation.



Immunohistochemical analysis of paraffin-embedded mouse small intestine tissue slide using 31525-1-AP (TMEM258 antibody) at dilution of 1:200 (under 10x lens). Heat mediated antigen retrieval with Tris-EDTA buffer (pH 9.0). This data was developed using the same antibody clone with 31525-1-PBS in a different storage buffer formulation.



Immunohistochemical analysis of paraffin-embedded mouse kidney tissue slide using 31525-1-AP (TMEM258 antibody) at dilution of 1:200 (under 10x lens). Heat mediated antigen retrieval with Tris-EDTA buffer (pH 9.0). This data was developed using the same antibody clone with 31525-1-PBS in a different storage buffer formulation.



Immunohistochemical analysis of paraffin-embedded mouse kidney tissue slide using 31525-1-AP (TMEM258 antibody) at dilution of 1:200 (under 40x lens). Heat mediated antigen retrieval with Tris-EDTA buffer (pH 9.0). This data was developed using the same antibody clone with 31525-1-PBS in a different storage buffer formulation.