

For Research Use Only

# ARSE Polyclonal antibody, PBS Only

Catalog Number: 31522-1-PBS



## Basic Information

Catalog Number:

31522-1-PBS

Size:

1 mg/ml

Source:

Rabbit

Isotype:

IgG

Immunogen Catalog Number:

AG24371

GenBank Accession Number:

BC130438

GeneID (NCBI):

415

UNIPROT ID:

P51690

Full Name:

arylsulfatase E (chondrodysplasia punctata 1)

Purification Method:

Antigen affinity Purification

## Applications

Tested Applications:

IHC, IF/ICC, Indirect ELISA

Species Specificity:

human, mouse

## Background Information

ARSE (arylsulfatase E), is a member of the sulfatase family. This enzyme is glycosylated post-translationally. Sulfatases, including ARSE, are essential for the correct composition of the bone and cartilage matrix.

## Storage

Storage:

Store at -80°C.

**The product is shipped with ice packs. Upon receipt, store it immediately at -80°C**

Storage Buffer:

PBS Only

For technical support and original validation data for this product please contact:

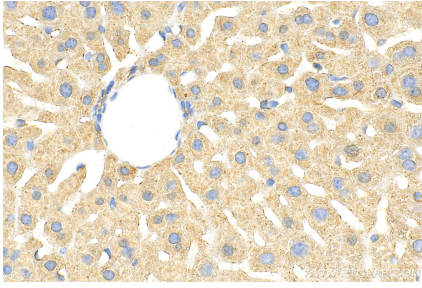
T: 4006900926

E: [Proteintech-CN@ptglab.com](mailto:Proteintech-CN@ptglab.com)

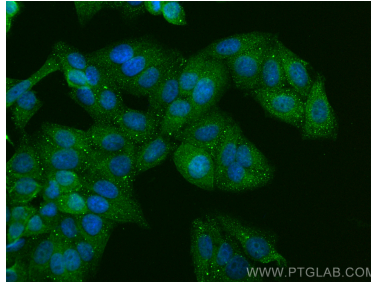
W: [ptgcn.com](http://ptgcn.com)

**This product is exclusively available under Proteintech Group brand and is not available to purchase from any other manufacturer.**

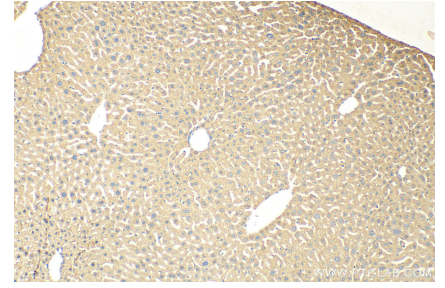
## Selected Validation Data



Immunohistochemical analysis of paraffin-embedded mouse liver tissue slide using 31522-1-AP (ARSE antibody) at dilution of 1:200 (under 40x lens). Heat mediated antigen retrieval with Tris-EDTA buffer (pH 9.0). This data was developed using the same antibody clone with 31522-1-PBS in a different storage buffer formulation.



Immunofluorescent analysis of (4% PFA) fixed HepG2 cells using ARSE antibody (31522-1-AP) at dilution of 1:400 and Multi-rAb CoraLite® Plus 488-Goat Anti-Rabbit Recombinant Secondary Antibody (H+L) (RGAR002). This data was developed using the same antibody clone with 31522-1-PBS in a different storage buffer formulation.



Immunohistochemical analysis of paraffin-embedded mouse liver tissue slide using 31522-1-AP (ARSE antibody) at dilution of 1:200 (under 10x lens). Heat mediated antigen retrieval with Tris-EDTA buffer (pH 9.0). This data was developed using the same antibody clone with 31522-1-PBS in a different storage buffer formulation.