

For Research Use Only

FAT2 Polyclonal antibody

Catalog Number: 31490-1-AP



Basic Information

Catalog Number:

31490-1-AP

Size:

450 ug/ml

Source:

Rabbit

Isotype:

IgG

Immunogen Catalog Number:

AG34942

GenBank Accession Number:

NM_001447

GeneID (NCBI):

2196

UNIPROT ID:

Q9NYQ8

Full Name:

FAT tumor suppressor homolog 2
(Drosophila)

Calculated MW:

479 kDa

Observed MW:

500-600 kDa

Purification Method:

Antigen affinity Purification

Recommended Dilutions:

WB 1:500-1:1000

Applications

Tested Applications:

WB, ELISA

Species Specificity:

human

Positive Controls:

WB : A431 cells,

Background Information

FAT2 (FAT atypical cadherin 2), also known as CDHF8. The gene product is a member of the cadherin superfamily, a group of integral membrane proteins characterized by the presence of cadherin-type repeats. This protein most likely functions as a cell adhesion molecule, controlling cell proliferation and playing an important role in cerebellum development. Expressed in epidermal keratinocytes, infant brain, cerebellum, and also in a variety of tumors, such as pancreatic cancer, diffuse type gastric cancer, ovarian cancer, esophageal cancer, skin squamous cell carcinoma, head and neck cancer. Not expressed in melanoma cell line A375 cells, normal epidermal melanocytes or normal dermal fibroblasts. Expressed in epidermal keratinocytes and squamous cell carcinoma (at protein level). The molecular weight of FAT2 is 473 kDa. The huge molecular masses (about 500-600 kDa) have hindered studies of the molecular aspects of its roles (PMID: 15923647).

Storage

Storage:

Store at -20°C. Stable for one year after shipment.

Storage Buffer:

PBS with 0.02% sodium azide and 50% glycerol pH 7.3.

Aliquoting is unnecessary for -20°C storage

For technical support and original validation data for this product please contact:

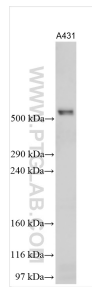
T: 4006900926

E: Proteintech-CN@ptglab.com

W: ptgcn.com

This product is exclusively available under Proteintech Group brand and is not available to purchase from any other manufacturer.

Selected Validation Data



Various lysates were subjected to SDS PAGE followed by western blot with 31490-1-AP (FAT2 antibody) at dilution of 1:600 incubated at room temperature for 1.5 hours.