

For Research Use Only

# SEL1L3 Polyclonal antibody, PBS Only

Catalog Number: 31489-1-PBS



## Basic Information

Catalog Number:

31489-1-PBS

Source:

Rabbit

Isotype:

IgG

Immunogen Catalog Number:

AG34856

GenBank Accession Number:

BC060867

GeneID (NCBI):

23231

UNIPROT ID:

Q68CR1

Full Name:

KIAA0746 protein

Observed MW:

129 kDa

Purification Method:

Antigen affinity Purification

## Applications

Tested Applications:

WB, IHC, IP, Indirect ELISA

Species Specificity:

human

## Background Information

SEL1L3 is also named suppressor of lin-12-like protein 3. SEL1L3, a protein with multiple glycosylation sites, was identified as the BCR target in 3/20 PVRL cases. SEL1L3 induces proliferation and BCR pathway activation in aggressive lymphoma cell lines. Moreover, SEL1L3 conjugated to a toxin killed exclusively lymphoma cells with respective BCR-reactivity (PMID: 38671086).

## Storage

Storage:

Store at -80°C.

**The product is shipped with ice packs. Upon receipt, store it immediately at -80°C**

Storage Buffer:

PBS only, pH7.3

For technical support and original validation data for this product please contact:

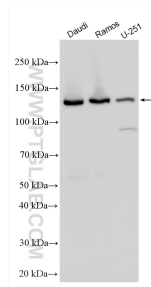
T: 4006900926

E: [Proteintech-CN@ptglab.com](mailto:Proteintech-CN@ptglab.com)

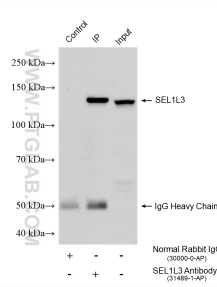
W: [ptgcn.com](http://ptgcn.com)

**This product is exclusively available under Proteintech Group brand and is not available to purchase from any other manufacturer.**

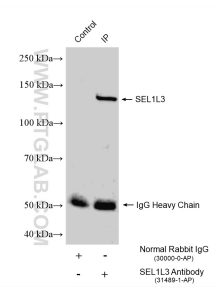
## Selected Validation Data



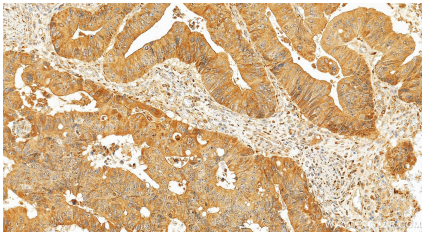
Various lysates were subjected to SDS PAGE followed by western blot with 31489-1-AP (SEL1L3 antibody) at dilution of 1:1000 incubated at room temperature for 1.5 hours. This data was developed using the same antibody clone with 31489-1-PBS in a different storage buffer formulation.



IP result of anti-SEL1L3 (IP:31489-1-AP, 4ug; Detection:31489-1-AP 1:1000) with Daudi cells lysate 1600 ug. This data was developed using the same antibody clone with 31489-1-PBS in a different storage buffer formulation.



IP result of anti-SEL1L3 (IP:31489-1-AP, 4ug; Detection:31489-1-AP 1:1000) with U-251 cells lysate 1320 ug. This data was developed using the same antibody clone with 31489-1-PBS in a different storage buffer formulation.



Immunohistochemical analysis of paraffin-embedded human colon cancer tissue slide using 31489-1-AP (SEL1L3 antibody) at dilution of 1:400 (under 20x lens). Heat mediated antigen retrieval with Tris-EDTA buffer (pH 9.0). This data was developed using the same antibody clone with 31489-1-PBS in a different storage buffer formulation.