

For Research Use Only

SEL1L3 Polyclonal antibody

Catalog Number: 31489-1-AP



Basic Information

Catalog Number:

31489-1-AP

Source:

Rabbit

Isotype:

IgG

Immunogen Catalog Number:

AG34856

GenBank Accession Number:

BC060867

GeneID (NCBI):

23231

UNIPROT ID:

Q68CR1

Full Name:

KIAA0746 protein

Observed MW:

129 kDa

Purification Method:

Antigen affinity Purification

Recommended Dilutions:

WB: 1:500-1:2000

IP: 0.5-4.0 ug for 1.0-3.0 mg of total protein lysate

IHC: 1:200-1:800

Applications

Tested Applications:

WB, IHC, IP, ELISA

Species Specificity:

human

Note-IHC: suggested antigen retrieval with TE buffer pH 9.0; (*) Alternatively, antigen retrieval may be performed with citrate buffer pH 6.0

Positive Controls:

WB : Daudi cells, Ramos cells, U-251 cells

IP : Daudi cells, U-251 cells

IHC : human colon cancer tissue,

Background Information

SEL1L3 is also named suppressor of lin-12-like protein 3. SEL1L3, a protein with multiple glycosylation sites, was identified as the BCR target in 3/20 PVRL cases. SEL1L3 induces proliferation and BCR pathway activation in aggressive lymphoma cell lines. Moreover, SEL1L3 conjugated to a toxin killed exclusively lymphoma cells with respective BCR-reactivity (PMID: 38671086).

Storage

Storage:

Store at -20°C. Stable for one year after shipment.

Storage Buffer:

PBS with 0.02% sodium azide and 50% glycerol, pH7.3

Aliquoting is unnecessary for -20°C storage

For technical support and original validation data for this product please contact:

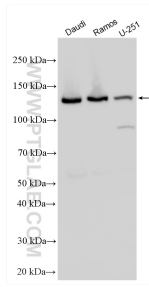
T: 4006900926

E: Proteintech-CN@ptglab.com

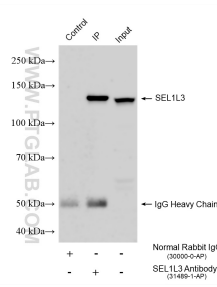
W: ptgcn.com

This product is exclusively available under Proteintech Group brand and is not available to purchase from any other manufacturer.

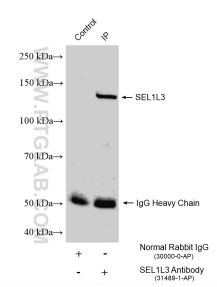
Selected Validation Data



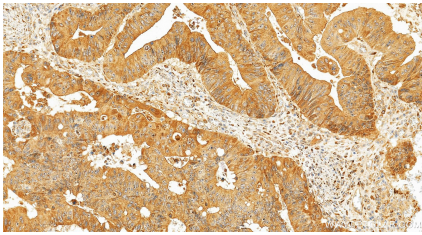
Various lysates were subjected to SDS PAGE followed by western blot with 31489-1-AP (SEL1L3 antibody) at dilution of 1:1000 incubated at room temperature for 1.5 hours.



IP result of anti-SEL1L3 (IP:31489-1-AP, 4ug; Detection:31489-1-AP 1:1000) with Daudi cells lysate 1600 ug.



IP result of anti-SEL1L3 (IP:31489-1-AP, 4ug; Detection:31489-1-AP 1:1000) with U-251 cells lysate 1320 ug.



Immunohistochemical analysis of paraffin-embedded human colon cancer tissue slide using 31489-1-AP (SEL1L3 antibody) at dilution of 1:400 (under 20x lens). Heat mediated antigen retrieval with Tris-EDTA buffer (pH 9.0).