

For Research Use Only

WASF2 Polyclonal antibody, PBS Only

Catalog Number: 31442-1-PBS

Featured Product



Basic Information

Catalog Number:

31442-1-PBS

Concentration:

1 mg/ml

Source:

Rabbit

Isotype:

IgG

Immunogen Catalog Number:

AG35663

GenBank Accession Number:

NM_006990.4

GeneID (NCBI):

10163

UNIPROT ID:

Q9Y6W5

Full Name:

WAS protein family, member 2

Calculated MW:

54kDa, 498aa

Observed MW:

80 kDa

Purification Method:

Antigen affinity Purification

Applications

Tested Applications:

WB, IHC, IF/ICC, Indirect ELISA

Species Specificity:

human, mouse

Background Information

WASF2 (WASp family Verprolin-homologous protein-2), also known as WAVE2, a member of the Wiskott-Aldrich syndrome protein (WASp) family of actin nucleation promoting factors, is a downstream effector molecule that implicates the signal transduction from small GTPases to the actin cytoskeleton, which can elongate the cell movement mode (PMID: 35849030,28332566). Moreover, WASF2 promoted the invasiveness of cancer cells by binding to actin cytoskeletal protein alpha-actinin 4 (ACTN4) (PMID: 30353690). The calculated MW of WASF2 is 54 kDa, with an isoform of 32 kDa, but the observed MW is about 80 kDa, which may be due to post-translational modification (PMID: 35849030,28332566,21383498,17389688,18362183,38391912).

Storage

Storage:

Store at -80°C.

The product is shipped with ice packs. Upon receipt, store it immediately at -80°C

Storage Buffer:

PBS only, pH7.3

For technical support and original validation data for this product please contact:

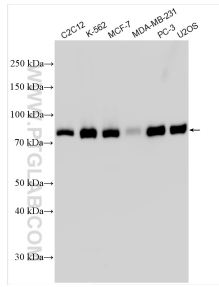
T: 4006900926

E: Proteintech-CN@ptglab.com

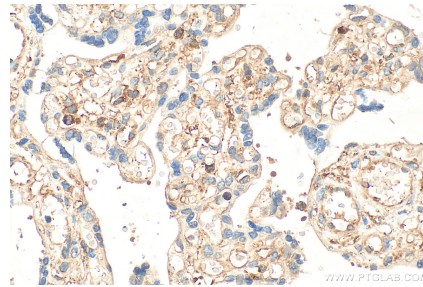
W: ptgcn.com

This product is exclusively available under Proteintech Group brand and is not available to purchase from any other manufacturer.

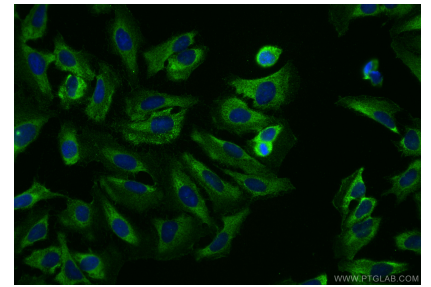
Selected Validation Data



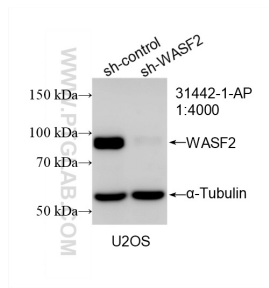
Various lysates were subjected to SDS PAGE followed by western blot with 31442-1-AP (WASF2 antibody) at dilution of 1:3000 incubated at room temperature for 1.5 hours. This data was developed using the same antibody clone with 31442-1-PBS in a different storage buffer formulation.



Immunohistochemical analysis of paraffin-embedded human placenta tissue slide using 31442-1-AP (WASF2 antibody) at dilution of 1:400 (under 40x lens). Heat mediated antigen retrieval with Tris-EDTA buffer (pH 9.0). This data was developed using the same antibody clone with 31442-1-PBS in a different storage buffer formulation.



Immunofluorescent analysis of (-20°C Ethanol) fixed U2OS cells using WASF2 antibody (31442-1-AP) at dilution of 1:200 and CoraLite®488-Conjugated Goat Anti-Rabbit IgG(H+L) (SA00013-2). This data was developed using the same antibody clone with 31442-1-PBS in a different storage buffer formulation.



WB result of WASF2 antibody (31442-1-AP; 1:4000; incubated at room temperature for 1.5 hours) with sh-Control and sh-WASF2 transfected U2OS cells. This data was developed using the same antibody clone with 31442-1-PBS in a different storage buffer formulation.