

For Research Use Only

# SLC8A2 Polyclonal antibody, PBS Only

Catalog Number: 31437-1-PBS



## Basic Information

Catalog Number:

31437-1-PBS

Size:

1 mg/ml

Source:

Rabbit

Isotype:

IgG

Immunogen Catalog Number:

AG34438

GenBank Accession Number:

NM\_015063

GeneID (NCBI):

6543

UNIPROT ID:

Q9UPR5

Full Name:

solute carrier family 8  
(sodium/calcium exchanger),  
member 2

Calculated MW:

921 aa, 100 kDa

Purification Method:

Antigen affinity Purification

## Applications

Tested Applications:

IHC, IF-P, Indirect ELISA

Species Specificity:

human, rat

## Background Information

SLC8A2, or solute carrier family 8 member 2, belongs to the SLC8 gene family, which encodes sodium-calcium exchangers (NCX). These proteins are part of the CaCA (Ca<sup>2+</sup>/Cation Antiporter) superfamily and play a significant role in regulating Ca<sup>2+</sup>-dependent events in many cell types. SLC8A2 has been implicated in various diseases, such as heart failure, arrhythmia, cerebral ischemia, hypertension, diabetes, and muscle dystrophy.

## Storage

Storage:

Store at -80°C.

**The product is shipped with ice packs. Upon receipt, store it immediately at -80°C**

Storage Buffer:

PBS Only

For technical support and original validation data for this product please contact:

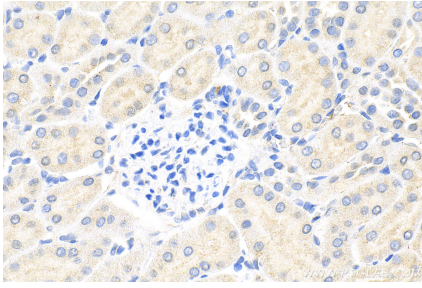
T: 4006900926

E: [Proteintech-CN@ptglab.com](mailto:Proteintech-CN@ptglab.com)

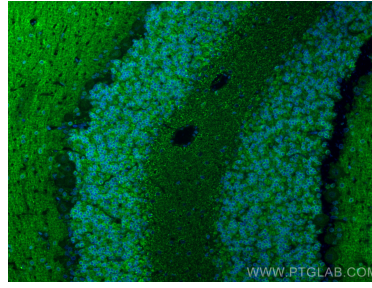
W: [ptgcn.com](http://ptgcn.com)

**This product is exclusively available under Proteintech Group brand and is not available to purchase from any other manufacturer.**

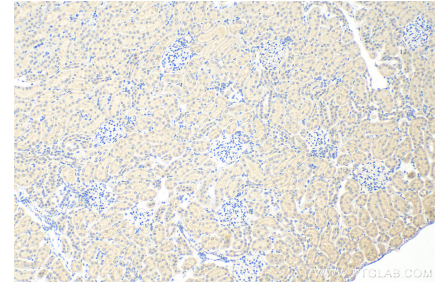
## Selected Validation Data



Immunohistochemical analysis of paraffin-embedded rat kidney tissue slide using 31437-1-AP (SLC8A2 antibody) at dilution of 1:200 (under 40x lens). Heat mediated antigen retrieval with Tris-EDTA buffer (pH 9.0). This data was developed using the same antibody clone with 31437-1-PBS in a different storage buffer formulation.



Immunofluorescent analysis of (4% PFA) fixed paraffin-embedded rat cerebellum tissue using SLC8A2 antibody (31437-1-AP) at dilution of 1:200 and CoraLite®488-Conjugated Goat Anti-Rabbit IgG(H+L) (SA00013-2). Heat mediated antigen retrieval with Tris-EDTA buffer (pH 9.0). This data was developed using the same antibody clone with 31437-1-PBS in a different storage buffer formulation.



Immunohistochemical analysis of paraffin-embedded rat kidney tissue slide using 31437-1-AP (SLC8A2 antibody) at dilution of 1:200 (under 10x lens). Heat mediated antigen retrieval with Tris-EDTA buffer (pH 9.0). This data was developed using the same antibody clone with 31437-1-PBS in a different storage buffer formulation.