

For Research Use Only

SLC8A2 Polyclonal antibody

Catalog Number: 31437-1-AP



Basic Information

Catalog Number:

31437-1-AP

Size:

300 ug/ml

Source:

Rabbit

Isotype:

IgG

Immunogen Catalog Number:

AG34438

GenBank Accession Number:

NM_015063

GeneID (NCBI):

6543

UNIPROT ID:

Q9UPR5

Full Name:

solute carrier family 8
(sodium/calcium exchanger),
member 2

Calculated MW:

921 aa, 100 kDa

Purification Method:

Antigen affinity Purification

Recommended Dilutions:

IHC 1:50-1:500

IF-P 1:50-1:500

Applications

Tested Applications:

IHC, IF-P, ELISA

Species Specificity:

human, rat

Positive Controls:

IHC : rat kidney tissue,

IF-P : rat cerebellum tissue,

**Note-IHC: suggested antigen retrieval with
TE buffer pH 9.0; (*) Alternatively, antigen
retrieval may be performed with citrate
buffer pH 6.0**

Background Information

SLC8A2, or solute carrier family 8 member 2, belongs to the SLC8 gene family, which encodes sodium-calcium exchangers (NCX). These proteins are part of the CaCA (Ca²⁺/Cation Antiporter) superfamily and play a significant role in regulating Ca²⁺-dependent events in many cell types. SLC8A2 has been implicated in various diseases, such as heart failure, arrhythmia, cerebral ischemia, hypertension, diabetes, and muscle dystrophy.

Storage

Storage:

Store at -20°C. Stable for one year after shipment.

Storage Buffer:

PBS with 0.02% sodium azide and 50% glycerol pH 7.3.

Aliquoting is unnecessary for -20°C storage

For technical support and original validation data for this product please contact:

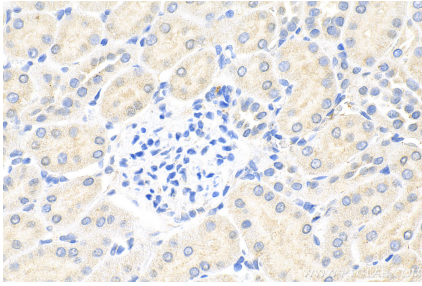
T: 4006900926

E: Proteintech-CN@ptglab.com

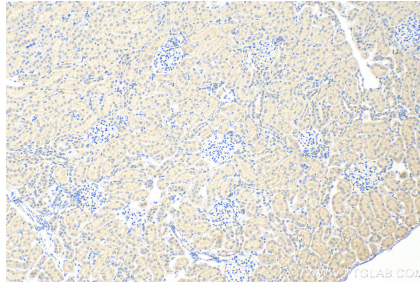
W: ptgcn.com

This product is exclusively available under Proteintech Group brand and is not available to purchase from any other manufacturer.

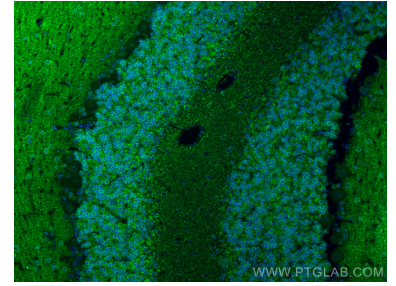
Selected Validation Data



Immunohistochemical analysis of paraffin-embedded rat kidney tissue slide using 31437-1-AP (SLC8A2 antibody) at dilution of 1:200 (under 40x lens). Heat mediated antigen retrieval with Tris-EDTA buffer (pH 9.0).



Immunohistochemical analysis of paraffin-embedded rat kidney tissue slide using 31437-1-AP (SLC8A2 antibody) at dilution of 1:200 (under 10x lens). Heat mediated antigen retrieval with Tris-EDTA buffer (pH 9.0).



Immunofluorescent analysis of (4% PFA) fixed paraffin-embedded rat cerebellum tissue using SLC8A2 antibody (31437-1-AP) at dilution of 1:200 and CoraLite®488-Conjugated Goat Anti-Rabbit IgG(H+L) (SA00013-2). Heat mediated antigen retrieval with Tris-EDTA buffer (pH 9.0).