

For Research Use Only

# SLC35B3 Polyclonal antibody

Catalog Number: 31436-1-AP



## Basic Information

Catalog Number:

31436-1-AP

Concentration:

500 ug/ml

Source:

Rabbit

Isotype:

IgG

Immunogen Catalog Number:

AG34349

GenBank Accession Number:

BC006973

GeneID (NCBI):

51000

UNIPROT ID:

Q9H1N7

Full Name:

solute carrier family 35, member B3

Calculated MW:

401 aa, 45 kDa

Observed MW:

40, 32 kDa

Purification Method:

Antigen affinity Purification

Recommended Dilutions:

WB 1:2000-1:12000

## Applications

Tested Applications:

WB, ELISA

Species Specificity:

human

Positive Controls:

WB : L02 cells, MCF-7 cells, MDA-MB-231 cells, U2OS cells, MG-63 cells

## Background Information

SLC35B3 (solute carrier family 35 member B3) is a member of the solute carrier family. SLC35B3 is involved in transporting 3-prime phosphoadenosine 5-prime phosphosulfate (PAPS) from the nucleus or the cytosol to the Golgi lumen. The observed MW of SLC35B3 is 40 kDa and 32 kDa, which is due to alternative splicing.

## Storage

Storage:

Store at -20°C. Stable for one year after shipment.

Storage Buffer:

PBS with 0.02% sodium azide and 50% glycerol pH 7.3.

Aliquoting is unnecessary for -20°C storage

For technical support and original validation data for this product please contact:

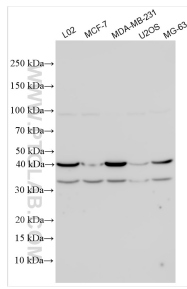
T: 4006900926

E: [Proteintech-CN@ptglab.com](mailto:Proteintech-CN@ptglab.com)

W: [ptgcn.com](http://ptgcn.com)

This product is exclusively available under Proteintech Group brand and is not available to purchase from any other manufacturer.

## Selected Validation Data



Various lysates were subjected to SDS PAGE followed by western blot with 31436-1-AP (SLC35B3 antibody) at dilution of 1:6000 incubated at room temperature for 1.5 hours.