

For Research Use Only

# C20orf26 Polyclonal antibody, PBS Only

Catalog Number: 31427-1-PBS



## Basic Information

Catalog Number:

31427-1-PBS

Size:

1 mg/ml

Source:

Rabbit

Isotype:

IgG

Immunogen Catalog Number:

AG35425

GenBank Accession Number:

BC031674

GeneID (NCBI):

26074

UNIPROT ID:

Q8NHU2

Full Name:

chromosome 20 open reading frame

26

Purification Method:

Antigen affinity Purification

## Applications

Tested Applications:

IHC, IF/ICC, Indirect ELISA

Species Specificity:

human, mouse

## Background Information

C20orf26, also known as CFAP61 (cilia and flagella associated protein 61), is a protein-coding gene located on human chromosome 20. The protein is predicted to be involved in cilium movement and cilium organization, and it is likely to be located in the axoneme and motile cilium. CFAP61 is also predicted to colocalize with the radial spoke stalk, which is a part of the structural framework of cilia and flagella.

## Storage

Storage:

Store at -80°C.

**The product is shipped with ice packs. Upon receipt, store it immediately at -80°C**

Storage Buffer:

PBS Only

For technical support and original validation data for this product please contact:

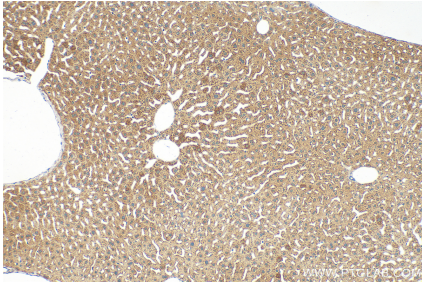
T: 4006900926

E: [Proteintech-CN@ptglab.com](mailto:Proteintech-CN@ptglab.com)

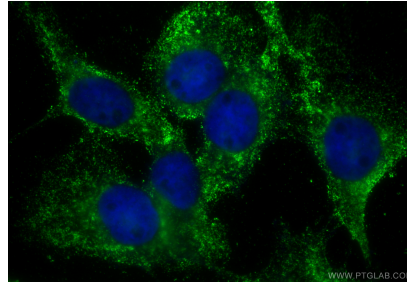
W: [ptgcn.com](http://ptgcn.com)

**This product is exclusively available under Proteintech Group brand and is not available to purchase from any other manufacturer.**

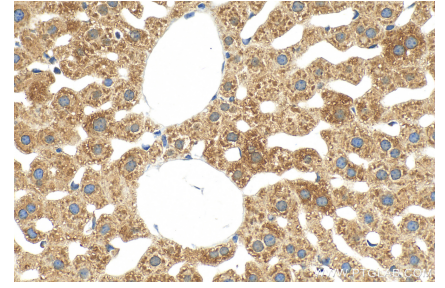
## Selected Validation Data



Immunohistochemical analysis of paraffin-embedded mouse liver tissue slide using 31427-1-AP (C20orf26 antibody) at dilution of 1:200 (under 10x lens). Heat mediated antigen retrieval with Tris-EDTA buffer (pH 9.0). This data was developed using the same antibody clone with 31427-1-PBS in a different storage buffer formulation.



Immunofluorescent analysis of (-20°C Methanol) fixed A431 cells using C20orf26 antibody (31427-1-AP) at dilution of 1:200 and Multi-rAb CoraLite® Plus 488-Goat Anti-Rabbit Recombinant Secondary Antibody (H+L) (RGAR002). This data was developed using the same antibody clone with 31427-1-PBS in a different storage buffer formulation.



Immunohistochemical analysis of paraffin-embedded mouse liver tissue slide using 31427-1-AP (C20orf26 antibody) at dilution of 1:200 (under 40x lens). Heat mediated antigen retrieval with Tris-EDTA buffer (pH 9.0). This data was developed using the same antibody clone with 31427-1-PBS in a different storage buffer formulation.