

For Research Use Only

CORO7 Polyclonal antibody, PBS Only

Catalog Number: 31425-1-PBS



Basic Information

Catalog Number:

31425-1-PBS

Size:

1 mg/ml

Source:

Rabbit

Isotype:

IgG

Immunogen Catalog Number:

AG35016

GenBank Accession Number:

NM_024535

GeneID (NCBI):

79585

UNIPROT ID:

P57737

Full Name:

coronin 7

Calculated MW:

101 kDa

Observed MW:

100 kDa

Purification Method:

Antigen affinity Purification

Applications

Tested Applications:

WB, IHC, IP, Indirect ELISA

Species Specificity:

human

Background Information

CORO7 also known as CRN7 belongs to the WD repeat coronin family, and functions as an F-actin regulator directing anterograde Golgi to endosome transport(PMID: 15327992).

Storage

Storage:

Store at -80°C.

The product is shipped with ice packs. Upon receipt, store it immediately at -80°C

Storage Buffer:

PBS Only

For technical support and original validation data for this product please contact:

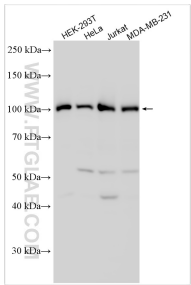
T: 4006900926

E: Proteintech-CN@ptglab.com

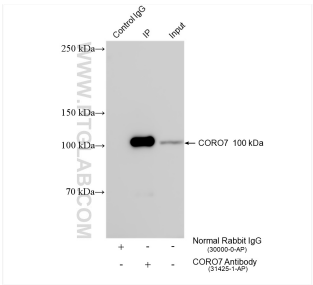
W: ptgcn.com

This product is exclusively available under Proteintech Group brand and is not available to purchase from any other manufacturer.

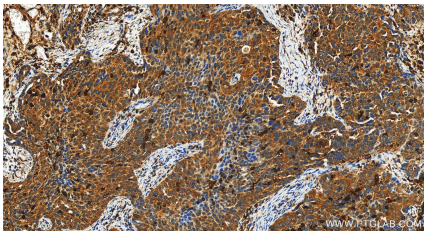
Selected Validation Data



Various lysates were subjected to SDS PAGE followed by western blot with 31425-1-AP (CORO7 antibody) at dilution of 1:2000 incubated at room temperature for 1.5 hours. This data was developed using the same antibody clone with 31425-1-PBS in a different storage buffer formulation.



IP result of anti-CORO7 (IP:31425-1-AP, 4ug; Detection:31425-1-AP 1:2000) with HeLa cells lysate 980 ug. This data was developed using the same antibody clone with 31425-1-PBS in a different storage buffer formulation.



Immunohistochemical analysis of paraffin-embedded human ovary cancer tissue slide using 31425-1-AP (CORO7 antibody) at dilution of 1:200 (under 20x lens). Heat mediated antigen retrieval with Tris-EDTA buffer (pH 9.0). This data was developed using the same antibody clone with 31425-1-PBS in a different storage buffer formulation.