

# Cathepsin B Polyclonal antibody

Catalog Number: 31399-1-AP

## Basic Information

**Catalog Number:**

31399-1-AP

**Size:**

270 µg/ml

**Source:**

Rabbit

**Isotype:**

IgG

**GenBank Accession Number:**

NM\_001908.5

**GeneID (NCBI):**

1508

**UNIPROT ID:**

P07858

**Full Name:**

cathepsin B

**Calculated MW:**

38kDa

**Observed MW:**

25 kDa and 31 kDa

**Purification Method:**

Antigen affinity Purification

**Recommended Dilutions:**

WB 1:500-1:2000

IHC 1:50-1:500

## Applications

**Tested Applications:**

WB, IHC, ELISA

**Species Specificity:**

human, mouse

**Note-IHC: suggested antigen retrieval with TE buffer pH 9.0; (\*) Alternatively, antigen retrieval may be performed with citrate buffer pH 6.0**

**Positive Controls:**

WB : A375 cells, HepG2 cells, RAW 264.7 cells

IHC : human lung cancer tissue,

## Background Information

CTSB (Cathepsin B) is also named as CPSB and belongs to the peptidase C1 family. It participates in intracellular degradation and turnover of proteins. Cathepsin B precursors found in human malignant ascites fluid do not possess mannose-rich carbohydrates suggesting that a defect in the post translational processing of carbohydrate moieties on tumor. Cathepsin B exists as both glycosylated and unglycosylated forms (PMID:1637335). In rat macrophages and hepatocytes pro- cathepsin B is 39 kDa (unglycosylated = 35 kDa), whereas in human fibroblasts procathepsin B is 44.5-46 kDa (unglycosylated = 39 kDa) (PMID:2097084). It can be detected the 43 kDa form of pro-CTSB, 31 kDa and 25 kDa mature forms in mouse brain by western blot (PMID:20616152).

## Storage

**Storage:**

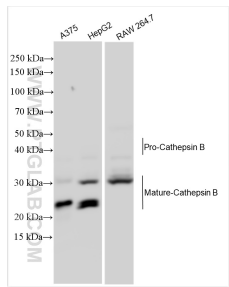
Store at -20°C. Stable for one year after shipment.

**Storage Buffer:**

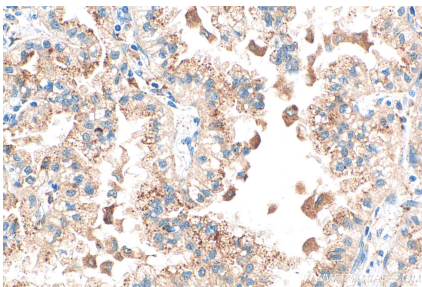
PBS with 0.02% sodium azide and 50% glycerol pH 7.3.

Aliquoting is unnecessary for -20°C storage

## Selected Validation Data



A375 cells were subjected to SDS PAGE followed by western blot with 31399-1-AP (Cathepsin B antibody) at dilution of 1:1000 incubated at room temperature for 1.5 hours.



Immunohistochemical analysis of paraffin-embedded human lung cancer tissue slide using 31399-1-AP (Cathepsin B antibody) at dilution of 1:200 (under 40x lens). Heat mediated antigen retrieval with Tris-EDTA buffer (pH 9.0).