

For Research Use Only

HOXB8 Polyclonal antibody

Catalog Number: 31387-1-AP



Basic Information

Catalog Number:

31387-1-AP

Concentration:

400 ug/ml

Source:

Rabbit

Isotype:

IgG

Immunogen Catalog Number:

AG34946

GenBank Accession Number:

NM_024016

GeneID (NCBI):

3218

UNIPROT ID:

P17481

Full Name:

homeobox B8

Calculated MW:

28 kDa

Observed MW:

31 kDa

Purification Method:

Antigen affinity Purification

Recommended Dilutions:

WB 1:500-1:2000

Applications

Tested Applications:

WB, ELISA

Species Specificity:

human, mouse, rat

Positive Controls:

WB : mouse kidney tissue, HCT 116 cells, HT-29 cells, LoVo cells, mouse epididymis tissue, rat kidney tissue

Background Information

HOXB8, also known as homeobox B8, is a member of the homeobox family. HOXB8 plays a role in the regulation of embryonic development. It helps determine the identity and differentiation of cells along the anterior-posterior axis of the body. Increased expression of HOXB8 is associated with colorectal cancer. It has been found to enhance the proliferation and metastasis of colorectal cancer cells by promoting epithelial-mesenchymal transition (EMT) via STAT3 activation (PMID: 30622439).

Storage

Storage:

Store at -20°C. Stable for one year after shipment.

Storage Buffer:

PBS with 0.02% sodium azide and 50% glycerol, pH7.3

Aliquoting is unnecessary for -20°C storage

For technical support and original validation data for this product please contact:

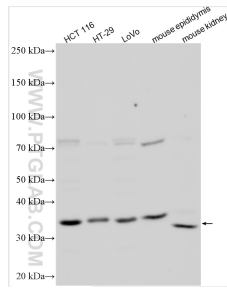
T: 4006900926

E: Proteintech-CN@ptglab.com

W: ptgcn.com

This product is exclusively available under Proteintech Group brand and is not available to purchase from any other manufacturer.

Selected Validation Data



Various lysates were subjected to SDS PAGE followed by western blot with 31387-1-AP (HOXB8 antibody) at dilution of 1:800 incubated at room temperature for 1.5 hours.



Various lysates were subjected to SDS PAGE followed by western blot with 31387-1-AP (HOXB8 antibody) at dilution of 1:1000 incubated at room temperature for 1.5 hours.