

# EPS15 Polyclonal antibody

Catalog Number: 31301-1-AP

## Basic Information

**Catalog Number:**

31301-1-AP

**Size:**

500 µg/ml

**Source:**

Rabbit

**Isotype:**

IgG

**Immunogen Catalog Number:**

AG35282

**GenBank Accession Number:**

NM\_001981.3

**GeneID (NCBI):**

2060

**UNIPROT ID:**

P42566

**Full Name:**

epidermal growth factor receptor  
pathway substrate 15

**Calculated MW:**

99 kDa

**Observed MW:**

140 kDa

**Purification Method:**

Antigen affinity Purification

**Recommended Dilutions:**

WB 1:2000-1:12000

## Applications

**Tested Applications:**

WB, ELISA

**Species Specificity:**

Human

**Positive Controls:**

WB : HeLa cells, MCF-7 cells

## Background Information

EPS15 was originally identified as a substrate for the kinase activity of the epidermal growth factor receptor (EGFR). EPS15 has a tripartite structure comprising an NH<sub>2</sub>-terminal portion, which contains three EH domains, a central putative coiled-coil region, and a COOH-terminal domain containing multiple copies of the amino acid triplet Aspartate-Proline-Phenylalanine (PMID: 10481267). EPS15 is phosphorylated on tyrosine residues following EGFR activation (PMID: 7689153).

## Storage

**Storage:**

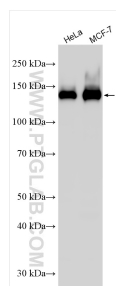
Store at -20°C. Stable for one year after shipment.

**Storage Buffer:**

PBS with 0.02% sodium azide and 50% glycerol pH 7.3.

Aliquoting is unnecessary for -20°C storage

## Selected Validation Data



Various lysates were subjected to SDS PAGE followed by western blot with 31301-1-AP (EPS15 antibody) at dilution of 1:6000 incubated at room temperature for 1.5 hours.