

For Research Use Only

C-Reactive Protein/CRP Polyclonal antibody

Catalog Number: 31251-1-AP



Basic Information

Catalog Number:

31251-1-AP

Size:

450 ug/ml

Source:

Rabbit

Isotype:

IgG

GenBank Accession Number:

NM_017096.3

GeneID (NCBI):

25419

UNIPROT ID:

P48199

Full Name:

C-reactive protein, pentraxin-related

Calculated MW:

25 kDa

Observed MW:

25-28 kDa

Purification Method:

Antigen affinity purification

Recommended Dilutions:

WB 1:1000-1:6000

Applications

Tested Applications:

WB, ELISA

Species Specificity:

rat

Positive Controls:

WB : rat liver tissue,

Background Information

C-reactive protein (CRP) is an acute-phase serum protein synthesized by the liver in response to interleukin-6 (IL-6) during inflammation. The name CRP derives from its ability to react with the C polysaccharide of *Streptococcus pneumoniae*. CRP is an annular, pentameric protein belonging to the pentraxin family. CRP displays several functions associated with host defense: it promotes agglutination, bacterial capsular swelling, phagocytosis, and complement fixation through its calcium-dependent binding to phosphorylcholine. It is used mainly as a marker of inflammation. This antibody is specific for rat Crp.

Storage

Storage:

Store at -20°C. Stable for one year after shipment.

Storage Buffer:

PBS with 0.02% sodium azide and 50% glycerol pH 7.3.

Aliquoting is unnecessary for -20°C storage

For technical support and original validation data for this product please contact:

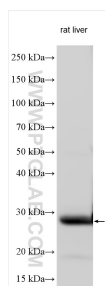
T: 4006900926

E: Proteintech-CN@ptglab.com

W: ptgcn.com

This product is exclusively available under Proteintech Group brand and is not available to purchase from any other manufacturer.

Selected Validation Data



Rat liver tissue was subjected to SDS PAGE, followed by western blot with 31251-1-AP (C-Reactive Protein/CRP antibody) at a dilution of 1:3000 incubated at room temperature for 1.5 hours.