

# BANF2 Polyclonal antibody

Catalog Number: 31236-1-AP

## Basic Information

**Catalog Number:**

31236-1-AP

**Size:**

300 µg/ml

**Source:**

Rabbit

**Isotype:**

IgG

**Immunogen Catalog Number:**

AG35307

**GenBank Accession Number:**

PL00285355

**GeneID (NCBI):**

140836

**UNIPROT ID:**

Q9H503

**Full Name:**

barrier to autointegration factor 2

**Calculated MW:**

10 kDa

**Observed MW:**

11 kDa

**Purification Method:**

Antigen affinity Purification

**Recommended Dilutions:**

WB 1:500-1:3000

## Applications

**Tested Applications:**

WB, ELISA

**Species Specificity:**

Human, mouse, rat

**Positive Controls:**

WB : mouse testis tissue, rat testis tissue

## Background Information

BANF2 (Barrier-to-autointegration factor 2), also called BAF-L (Barrier-to-autointegration factor-like protein), is a homologous gene termed BAF, which shows a 53% similarity in the protein sequence with BANF2 in humans (PMID: 35216101; 16337940). Unlike BAF, BANF2 plays an important role in spermiogenesis and spermatozoal function, and it is a male germ cell marker, whose expression is highly associated with the maturation of male germ cells (PMID: 33951625; 35216101).

## Storage

**Storage:**

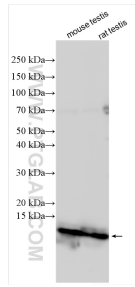
Store at -20°C. Stable for one year after shipment.

**Storage Buffer:**

PBS with 0.02% sodium azide and 50% glycerol pH 7.3.

Aliquoting is unnecessary for -20°C storage

## Selected Validation Data



Various lysates were subjected to SDS PAGE followed by western blot with 31236-1-AP (BANF2 antibody) at dilution of 1:1500 incubated at room temperature for 1.5 hours.