

For Research Use Only

RC3H1 Polyclonal antibody, PBS Only

Catalog Number: 31234-1-PBS

Featured Product



Basic Information

Catalog Number:

31234-1-PBS

Source:

Rabbit

Isotype:

IgG

Immunogen Catalog Number:

AG35089

GenBank Accession Number:

NM_001300850

GeneID (NCBI):

149041

UNIPROT ID:

Q5TC82

Full Name:

ring finger and CCCH-type zinc finger domains 1

Calculated MW:

126 kDa

Observed MW:

130-150 kDa

Purification Method:

Antigen affinity Purification

Applications

Tested Applications:

WB, IHC, IF/ICC, Indirect ELISA

Species Specificity:

human, mouse

Background Information

Roquin-1 (Rc3h1) is an E3 ubiquitin ligase originally discovered in a mutational screen for genetic factors contributory to systemic lupus erythematosus-like symptoms in mice. A single base pair mutation in the Rc3h1 gene resulted in the manifestation of autoantibody production and sustained immunological inflammation characterized by excessive T follicular helper cell activation and formation of germinal centers. (PMID: 26673963)

Storage

Storage:

Store at -80°C.

The product is shipped with ice packs. Upon receipt, store it immediately at -80°C

Storage Buffer:

PBS only, pH7.3

For technical support and original validation data for this product please contact:

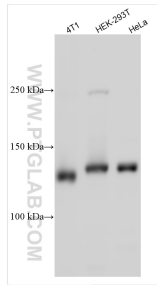
T: 4006900926

E: Proteintech-CN@ptglab.com

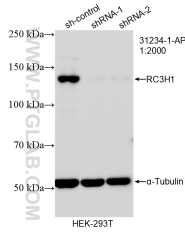
W: ptgcn.com

This product is exclusively available under Proteintech Group brand and is not available to purchase from any other manufacturer.

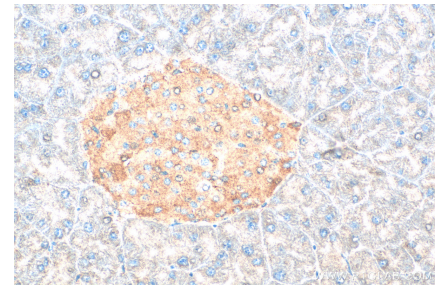
Selected Validation Data



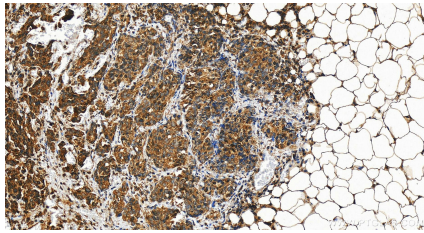
Various lysates were subjected to SDS PAGE followed by western blot with 31234-1-AP (RC3H1 antibody) at dilution of 1:5000 incubated at room temperature for 1.5 hours. This data was developed using the same antibody clone with 31234-1-PBS in a different storage buffer formulation.



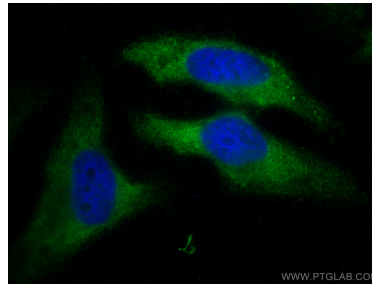
WB result of RC3H1 antibody (31234-1-AP; 1:2000; incubated at room temperature for 1.5 hours) with sh-Control and sh-RC3H1 transfected HEK-293T cells. This data was developed using the same antibody clone with 31234-1-PBS in a different storage buffer formulation.



Immunohistochemical analysis of paraffin-embedded mouse pancreas tissue slide using 31234-1-AP (RC3H1 antibody) at dilution of 1:1000 (under 40x lens). Heat mediated antigen retrieval with Tris-EDTA buffer (pH 9.0). This data was developed using the same antibody clone with 31234-1-PBS in a different storage buffer formulation.



Immunohistochemical analysis of paraffin-embedded human ovary cancer tissue slide using 31234-1-AP (RC3H1 antibody) at dilution of 1:1000 (under 20x lens). Heat mediated antigen retrieval with Tris-EDTA buffer (pH 9.0). This data was developed using the same antibody clone with 31234-1-PBS in a different storage buffer formulation.



Immunofluorescent analysis of (-20°C Ethanol) fixed HeLa cells using RC3H1 antibody (31234-1-AP) at dilution of 1:400 and Multi-rAb Coralite® Plus 488-Goat Anti-Rabbit Recombinant Secondary Antibody (H+L) (RGAR002). This data was developed using the same antibody clone with 31234-1-PBS in a different storage buffer formulation.